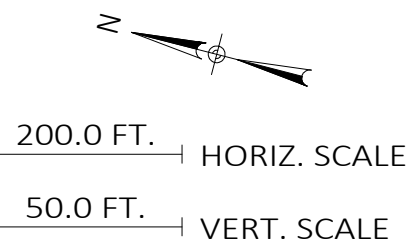


NO.	REVISIONS	DATE	BY	CHK	APR
A	ISSUED FOR INFO ONLY	3/4/15	PLS	DAF	DMV
B	REISSUED FOR INFO ONLY W/LEGEND AND CLEARANCE LINES	3/19/15	PLS	DAF	---
C	ISSUED FOR OE 30% REVIEW INFO	5/14/15	---	---	---
D	REV. LOC'S PROP. OWNER & PERMIT COMMENT; ADD EX. STR. #S	5/21/15	PLS	DAF	---



HENKELS & M'COY, INC.
985 JOLLY ROAD
BLUE BELL, PA 19422

- 28' CLEARANCE LINE
- 50' CLEARANCE LINE
- TRANSMISSION LINE CENTERLINE
- RIGHT-OF-WAY LINE
- PROPOSED STEEL POLES (CHURCH STEELE LINE)
- EXISTING WOOD H-FRAMES (CHURCH-STEELE LINE)
- EXISTING LATTICE TOWER (KEENEY-STEELE LINE)



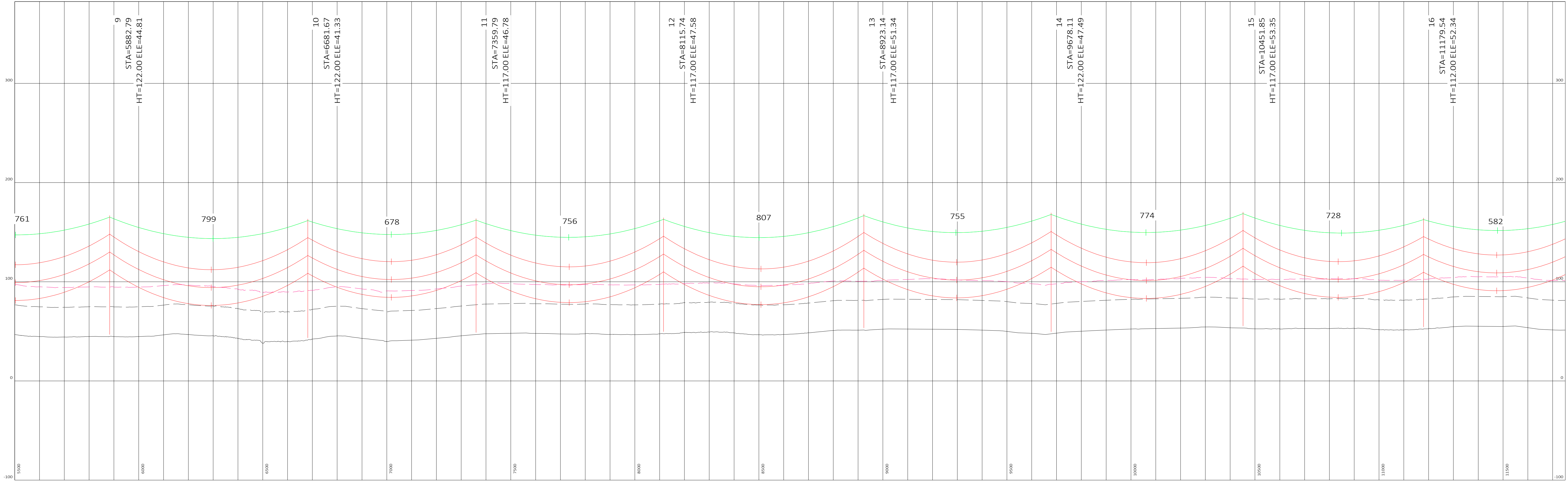
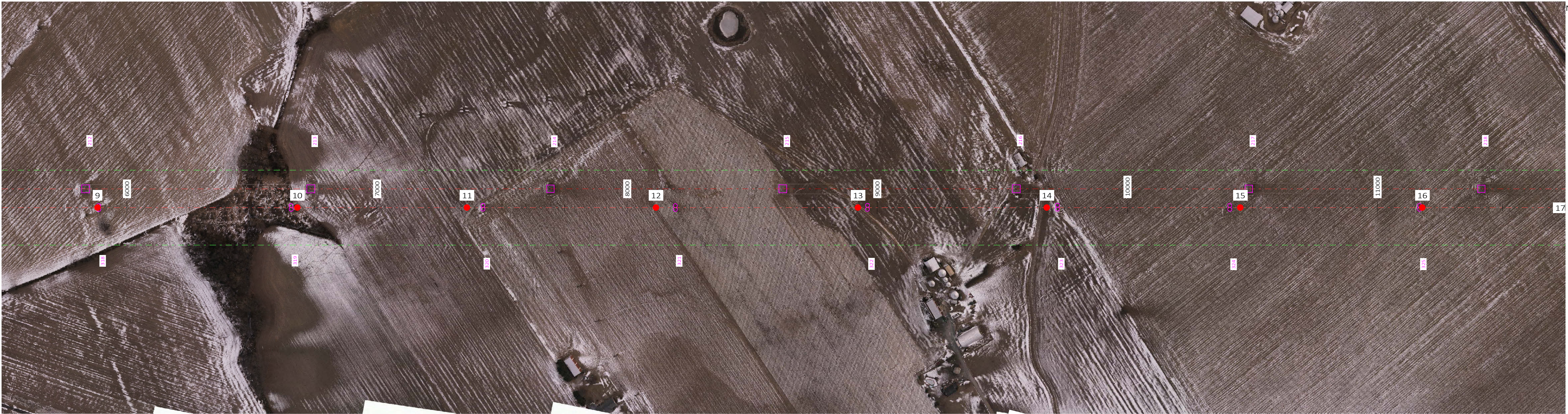
ENGINEERING RECORD	
DRAWN BY:	PLS
DESIGNED BY:	KL
CHECKED BY:	DAF
APPROVED BY:	DMV
PROJECT#:	UTLBRM5CS



CHURCH-STEELE PROPOSED ROUTE

DWG.NO.: UTLBRM5CS - P	SHEET: 1 OF 23	REV: D
------------------------	----------------	--------

CADFILE:

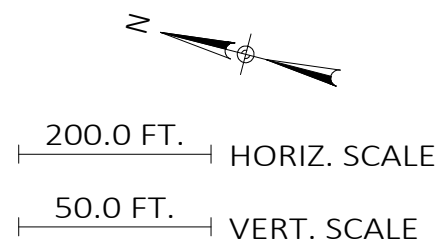


NO.	REVISIONS	DATE	BY	CHK	APR
A	ISSUED FOR INFO ONLY	3/4/15	PLS	DAF	DMV
B	REISSUED FOR INFO ONLY W/LEGEND AND CLEARANCE LINES	3/19/15	PLS	DAF	---
C	ISSUED FOR OE 30% REVIEW INFO	5/14/15	---	---	---
D	REV. LOC'S PROP. OWNER & PERMIT COMMENT; ADD EX. STR #5	5/21/15	PLS	DAF	---

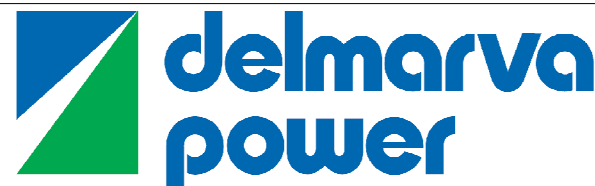


HENKELS & M'COY, INC.
985 JOLLY ROAD
BLUE BELL, PA 19422

- 28' CLEARANCE LINE
- 50' CLEARANCE LINE
- TRANSMISSION LINE CENTERLINE
- RIGHT-OF-WAY LINE
- PROPOSED STEEL POLES (CHURCH STEELE LINE)
- EXISTING WOOD H-FRAMES (CHURCH-STEEL LINE)
- EXISTING LATTICE TOWER (KEENEY-STEEL LINE)



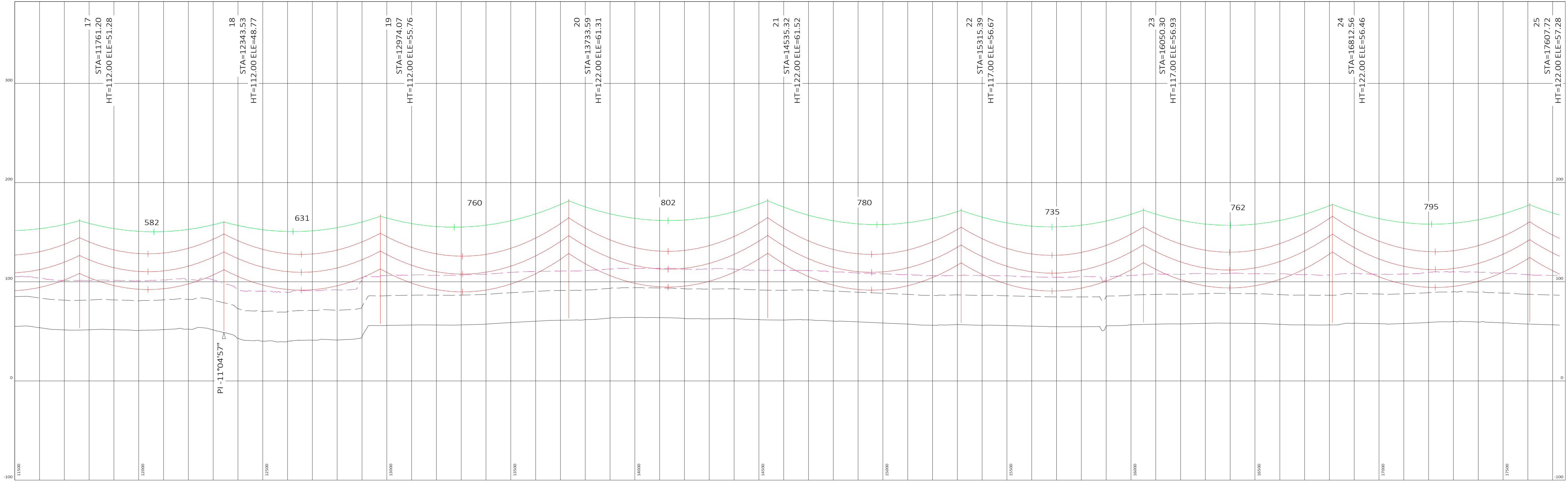
ENGINEERING RECORD	
DRAWN BY:	PLS
DESIGNED BY:	KL
CHECKED BY:	DAF
APPROVED BY:	DMV
PROJECT#:	UTLBRM5CS



CHURCH-STEEL PROPOSED ROUTE

DWG.NO.: UTLBRM5CS - P	SHEET: 2 OF 23	REV: D
------------------------	----------------	--------

CADFILE:

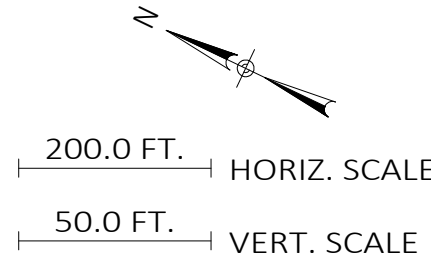


NO.	REVISIONS	DATE	BY	CHK	APR
A	ISSUED FOR INFO ONLY	3/4/15	PLS	DAF	DMV
B	REISSUED FOR INFO ONLY W/LEGEND AND CLEARANCE LINES	3/19/15	PLS	DAF	---
C	ISSUED FOR OE 30% REVIEW INFO	5/14/15	---	---	---
D	REV. LOC'S PROP. OWNER & PERMIT COMMENT; ADD EX. STR #S	5/21/15	PLS	DAF	---

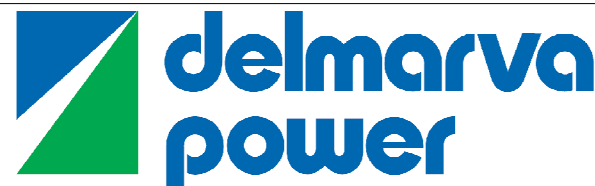


HENKELS & M'COY, INC.
985 JOLLY ROAD
BLUE BELL, PA 19422

- 28' CLEARANCE LINE
- 50' CLEARANCE LINE
- TRANSMISSION LINE CENTERLINE
- RIGHT-OF-WAY LINE
- PROPOSED STEEL POLES (CHURCH-STEELE LINE)
- EXISTING WOOD H-FRAMES (CHURCH-STEELE LINE)
- EXISTING LATTICE TOWER (KEENEY-STEELE LINE)



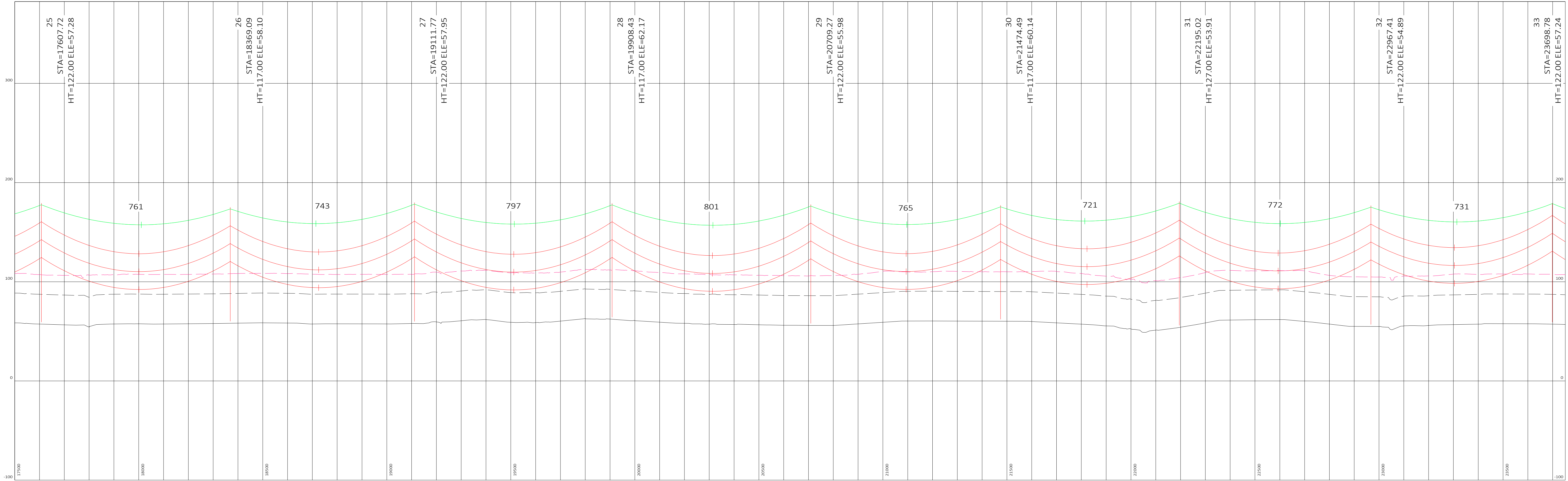
ENGINEERING RECORD	
DRAWN BY:	PLS
DESIGNED BY:	KL
CHECKED BY:	DAF
APPROVED BY:	DMV
PROJECT#:	UTLBRM5CS



CHURCH-STEELE PROPOSED ROUTE

DWG.NO.: UTLBRM5CS - P	SHEET: 3 OF 23	REV: D
------------------------	----------------	--------

CADFILE:

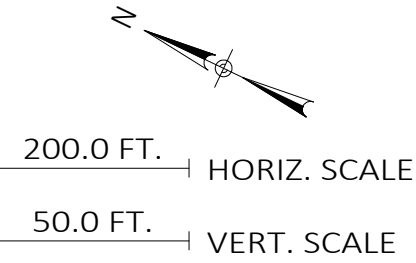


NO.	REVISIONS	DATE	BY	CHK	APR
A	ISSUED FOR INFO ONLY	3/4/15	PLS	DAF	DMV
B	REISSUED FOR INFO ONLY W/LEGEND AND CLEARANCE LINES	3/19/15	PLS	DAF	---
C	ISSUED FOR OE 30% REVIEW INFO	5/14/15	---	---	---
D	REV. LOC'S PROP. OWNER & PERMIT COMMENT; ADD EX. STR #S	5/21/15	PLS	DAF	---

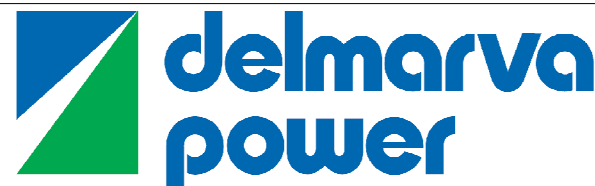


HENKELS & M'COY, INC.
985 JOLLY ROAD
BLUE BELL, PA 19422

- 28' CLEARANCE LINE
- 50' CLEARANCE LINE
- TRANSMISSION LINE CENTERLINE
- RIGHT-OF-WAY LINE
- PROPOSED STEEL POLES (CHURCH-STEELE LINE)
- EXISTING WOOD H-FRAMES (CHURCH-STEELE LINE)
- EXISTING LATTICE TOWER (KEENEY-STEELE LINE)



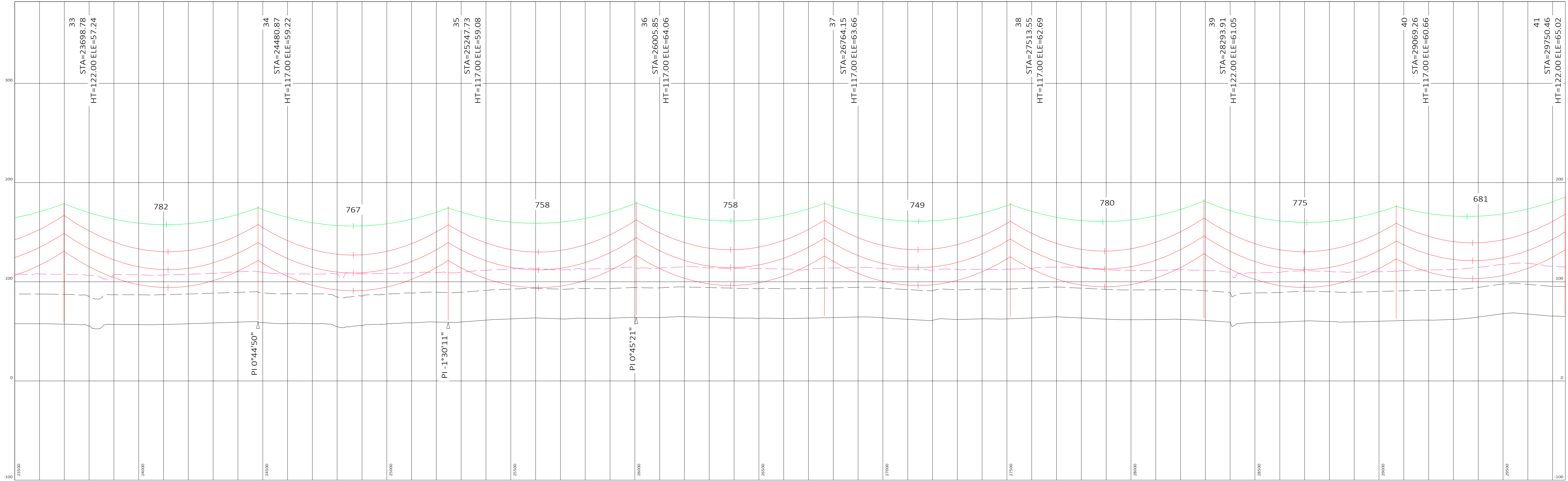
ENGINEERING RECORD	
DRAWN BY:	PLS
DESIGNED BY:	KL
CHECKED BY:	DAF
APPROVED BY:	DMV
PROJECT#:	UTLBRM5CS



CHURCH-STEELE PROPOSED ROUTE

DWG.NO.: UTLBRM5CS - P SHEET: 4 OF 23 REV: D

CADFILE:

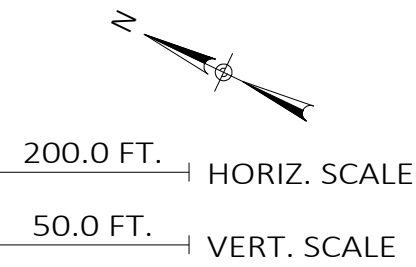


NO.	REVISIONS	DATE	BY	CHK	APR
A	ISSUED FOR INFO ONLY	3/4/15	PLS	DAF	DMV
B	REISSUED FOR INFO ONLY W/LEGEND AND CLEARANCE LINES	3/19/15	PLS	DAF	---
C	ISSUED FOR OE 30% REVIEW INFO	5/14/15	---	---	---
D	REV. LOC'S PROP. OWNER & PERMIT COMMENT; ADD EX. STR #S	5/21/15	PLS	DAF	---

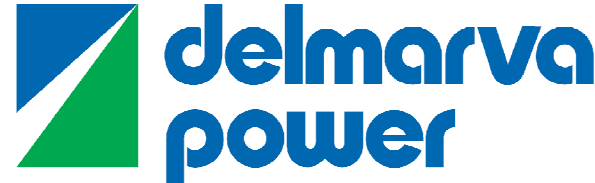


HENKELS & M'COY, INC.
985 JOLLY ROAD
BLUE BELL, PA 19422

- 28' CLEARANCE LINE
- 50' CLEARANCE LINE
- TRANSMISSION LINE CENTERLINE
- RIGHT-OF-WAY LINE
- PROPOSED STEEL POLES (CHURCH STEELE LINE)
- EXISTING WOOD H-FRAMES (CHURCH-STEELE LINE)
- EXISTING LATTICE TOWER (KEENEY-STEELE LINE)



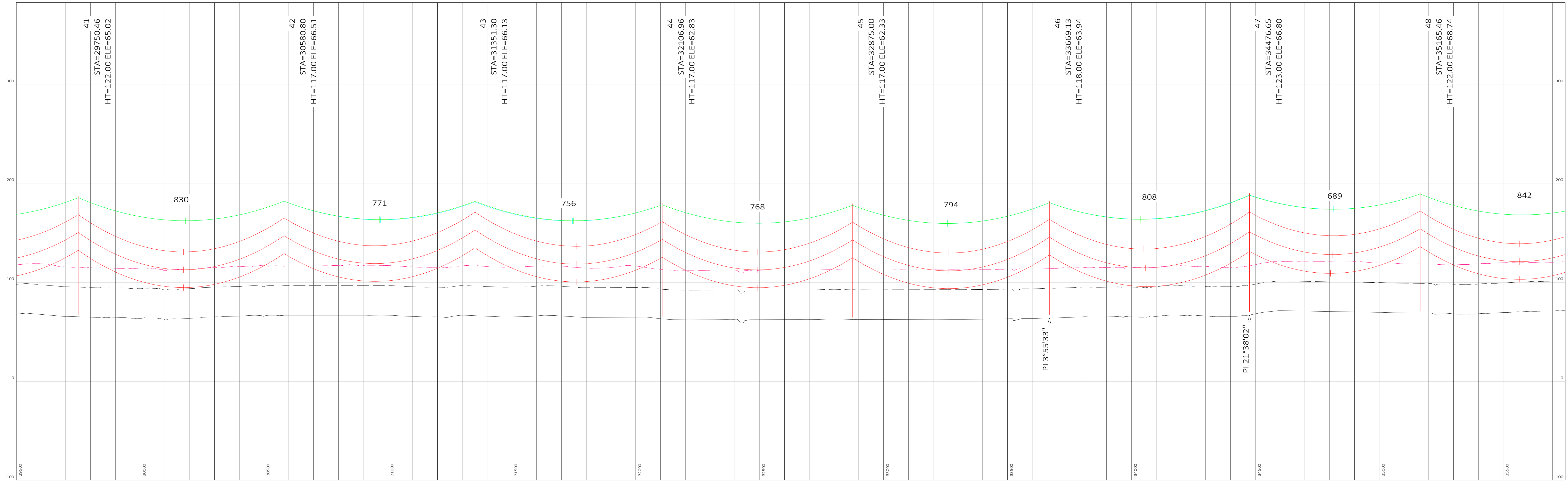
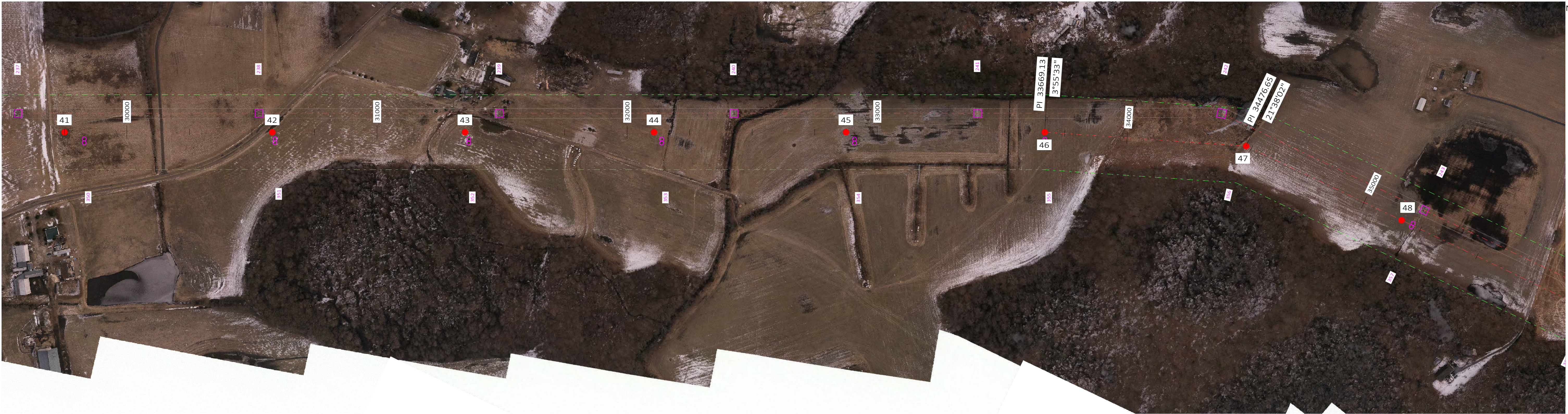
ENGINEERING RECORD	
DRAWN BY:	PLS
DESIGNED BY:	KL
CHECKED BY:	DAF
APPROVED BY:	DMV
PROJECT#:	UTLBRM5CS



CHURCH-STEELE PROPOSED ROUTE

DWG.NO.: UTLBRM5CS - P	SHEET: 5 OF 23	REV: D
------------------------	----------------	--------

CADFILE:

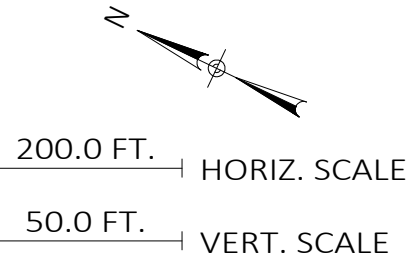


NO.	REVISIONS	DATE	BY	CHK	APR
A	ISSUED FOR INFO ONLY	3/4/15	PLS	DAF	DMV
B	REISSUED FOR INFO ONLY W/LEGEND AND CLEARANCE LINES	3/19/15	PLS	DAF	---
C	ISSUED FOR OE 30% REVIEW INFO	5/14/15	---	---	---
D	REV. LOC'S PROP. OWNER & PERMIT COMMENT; ADD EX. STR #S	5/21/15	PLS	DAF	---

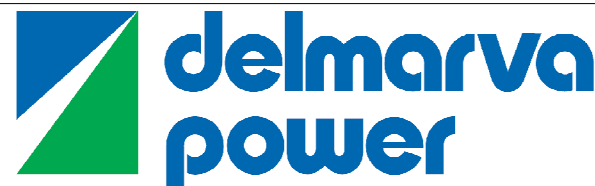


HENKELS & M'COY, INC.
985 JOLLY ROAD
BLUE BELL, PA 19422

- 28' CLEARANCE LINE
- 50' CLEARANCE LINE
- TRANSMISSION LINE CENTERLINE
- RIGHT-OF-WAY LINE
- PROPOSED STEEL POLES (CHURCH STEELE LINE)
- EXISTING WOOD H-FRAMES (CHURCH-STEEL LINE)
- EXISTING LATTICE TOWER (KEENEY-STEEL LINE)



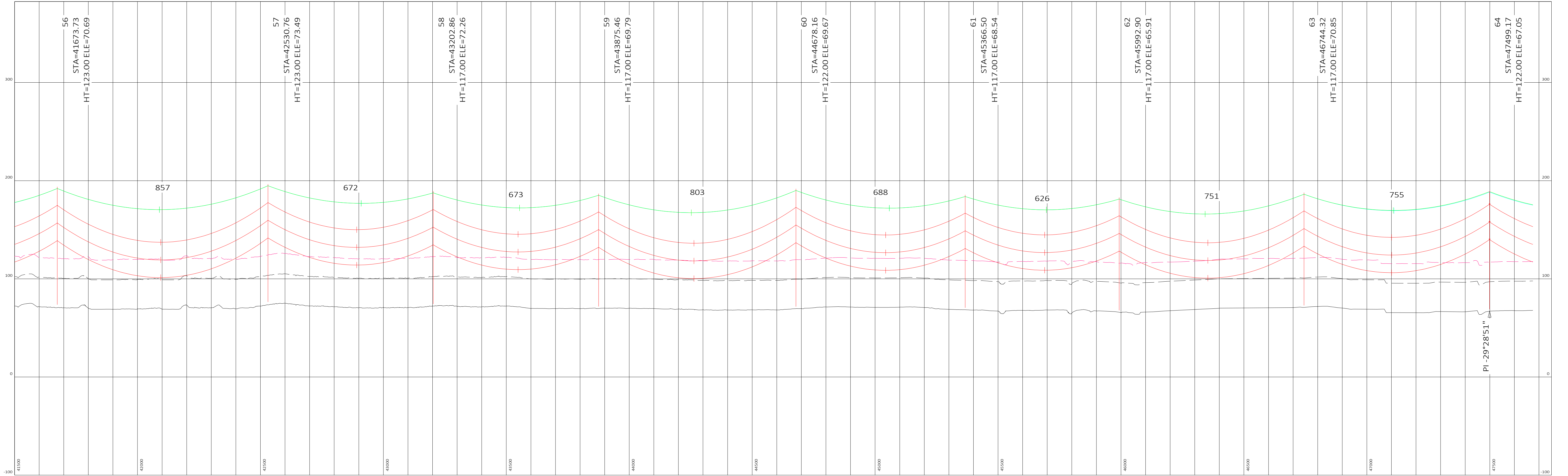
ENGINEERING RECORD	
DRAWN BY:	PLS
DESIGNED BY:	KL
CHECKED BY:	DAF
APPROVED BY:	DMV
PROJECT#:	UTLBRM5CS



CHURCH-STEEL PROPOSED ROUTE

DWG.NO.: UTLBRM5CS - P	SHEET: 6 OF 23	REV: D
------------------------	----------------	--------

CADFILE:

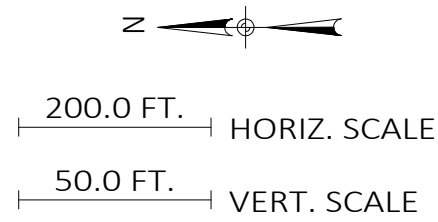


NO.	REVISIONS	DATE	BY	CHK	APR
A	ISSUED FOR INFO ONLY	3/4/15	PLS	DAF	DMV
B	REISSUED FOR INFO ONLY W/LEGEND AND CLEARANCE LINES	3/19/15	PLS	DAF	---
C	ISSUED FOR OE 30% REVIEW INFO	5/14/15	---	---	---
D	REV. LOC'S PROP. OWNER & PERMIT COMMENT; ADD EX. STR #S	5/21/15	PLS	DAF	---

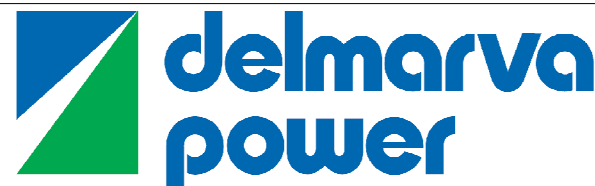


HENKELS & M'COY, INC.
985 JOLLY ROAD
BLUE BELL, PA 19422

- 28' CLEARANCE LINE
- 50' CLEARANCE LINE
- TRANSMISSION LINE CENTERLINE
- RIGHT-OF-WAY LINE
- PROPOSED STEEL POLES (CHURCH-STEELE LINE)
- EXISTING WOOD H-FRAMES (CHURCH-STEELE LINE)
- EXISTING LATTICE TOWER (KEENEY-STEELE LINE)



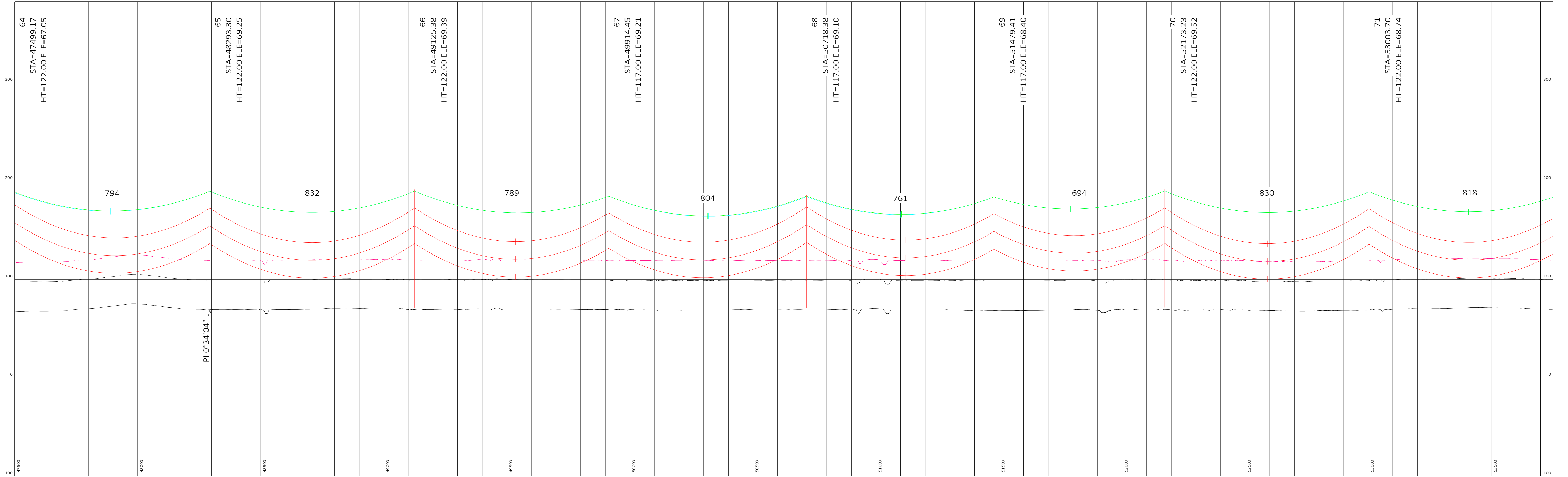
ENGINEERING RECORD	
DRAWN BY:	PLS
DESIGNED BY:	KL
CHECKED BY:	DAF
APPROVED BY:	DMV
PROJECT#:	UTLBRM5CS



CHURCH-STEELE PROPOSED ROUTE

DWG.NO.: UTLBRM5CS - P SHEET: 8 OF 23 REV: D

CADFILE:

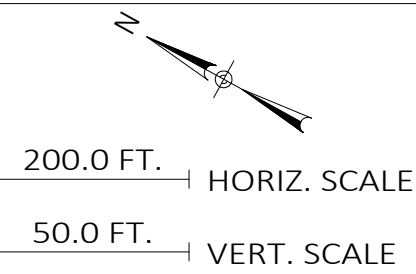


NO.	REVISIONS	DATE	BY	CHK	APR
A	ISSUED FOR INFO ONLY	3/4/15	PLS	DAF	DMV
B	REISSUED FOR INFO ONLY W/LEGEND AND CLEARANCE LINES	3/19/15	PLS	DAF	---
C	ISSUED FOR OE 30% REVIEW INFO	5/14/15	---	---	---
D	REV. LOC'S PROP. OWNER & PERMIT COMMENT; ADD EX. STR. #S	5/21/15	PLS	DAF	---

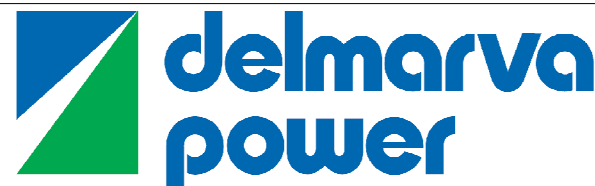


HENKELS & M'COY, INC.
985 JOLLY ROAD
BLUE BELL, PA 19422

- 28' CLEARANCE LINE
- 50' CLEARANCE LINE
- TRANSMISSION LINE CENTERLINE
- RIGHT-OF-WAY LINE
- PROPOSED STEEL POLES (CHURCH STEELE LINE)
- EXISTING WOOD H-FRAMES (CHURCH-STEEL LINE)
- EXISTING LATTICE TOWER (KEENEY-STEEL LINE)



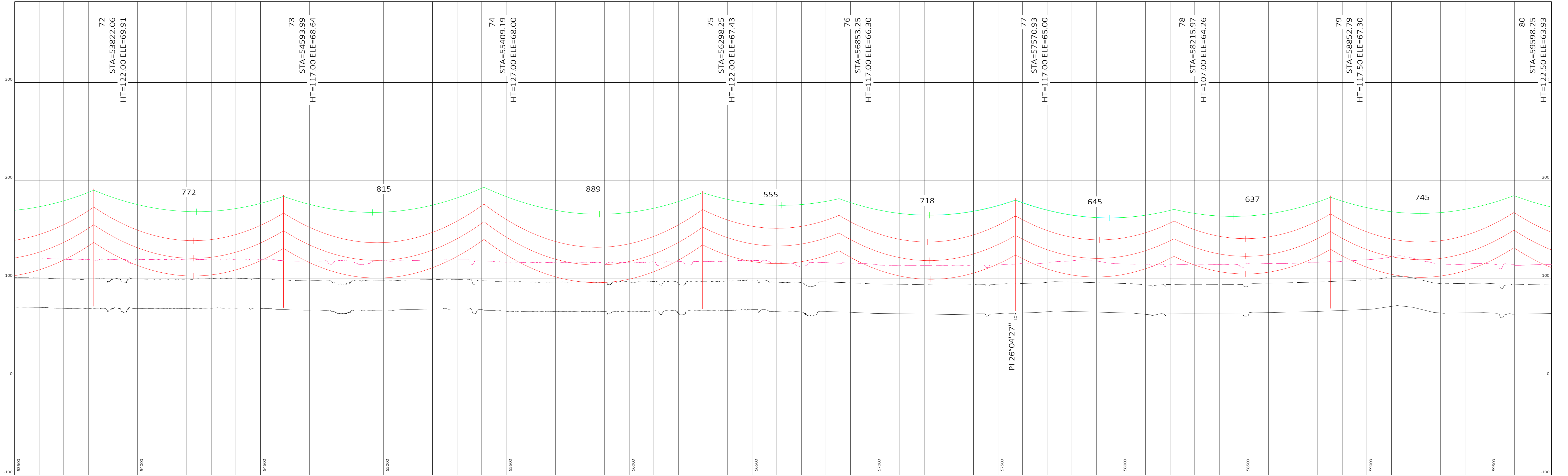
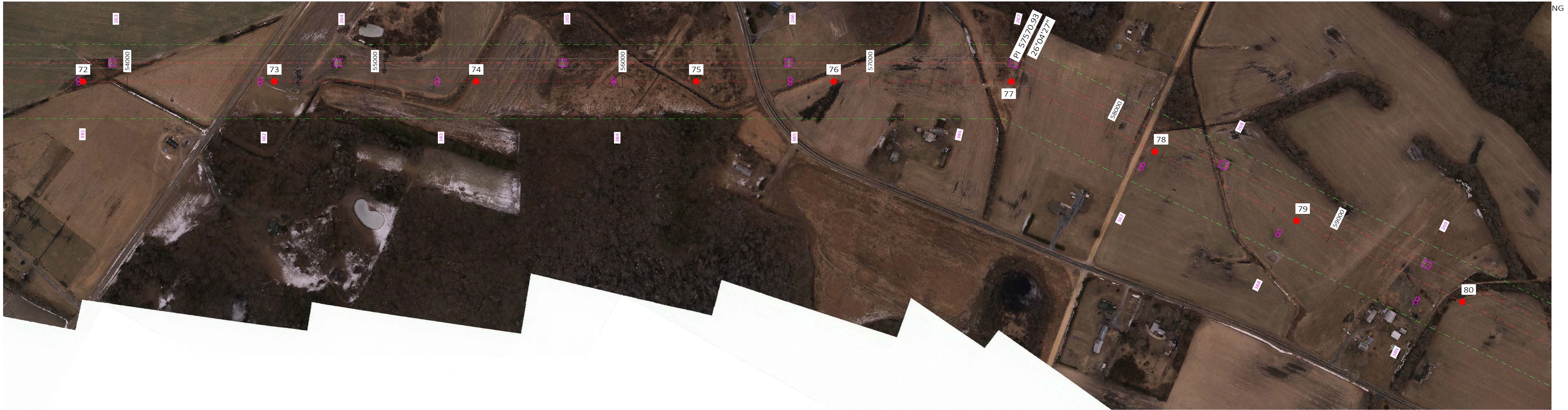
ENGINEERING RECORD	
DRAWN BY:	PLS
DESIGNED BY:	KL
CHECKED BY:	DAF
APPROVED BY:	DMV
PROJECT#:	UTLBRM5CS



CHURCH-STEEL PROPOSED ROUTE

DWG.NO.: UTLBRM5CS - P	SHEET: 9 OF 23	REV: D
------------------------	----------------	--------

CADFILE:

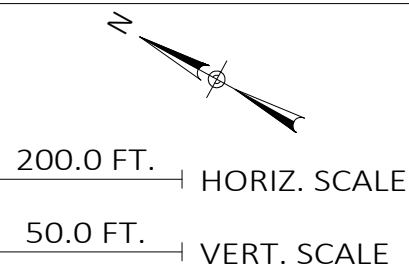


NO.	REVISIONS	DATE	BY	CHK	APR
A	ISSUED FOR INFO ONLY	3/4/15	PLS	DAF	DMV
B	REISSUED FOR INFO ONLY W/LEGEND AND CLEARANCE LINES	3/19/15	PLS	DAF	---
C	ISSUED FOR OE 30% REVIEW INFO	5/14/15	---	---	---
D	REV. LOC'S PROP. OWNER & PERMIT COMMENT; ADD EX. STR #S	5/21/15	PLS	DAF	---

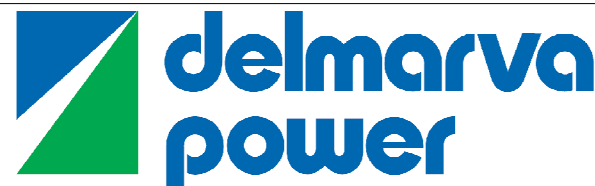


HENKELS & M'COY, INC.
985 JOLLY ROAD
BLUE BELL, PA 19422

- 28' CLEARANCE LINE
- 50' CLEARANCE LINE
- TRANSMISSION LINE CENTERLINE
- RIGHT-OF-WAY LINE
- PROPOSED STEEL POLES (CHURCH STEELE LINE)
- EXISTING WOOD H-FRAMES (CHURCH-STEEL LINE)
- EXISTING LATTICE TOWER (KEENEY-STEEL LINE)



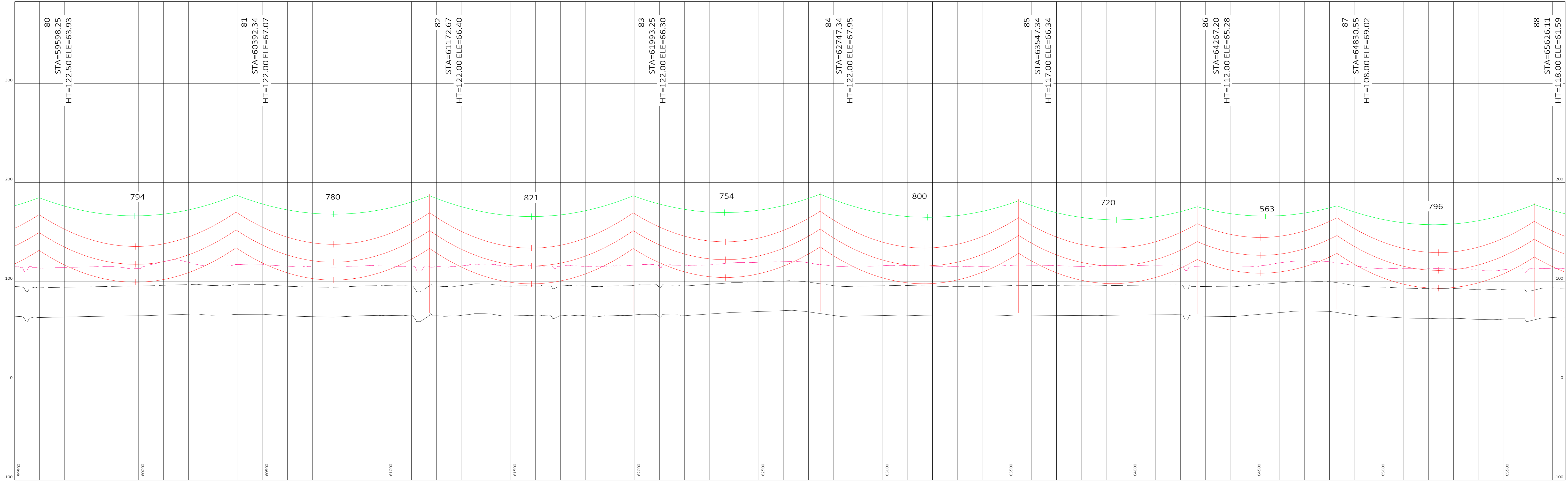
ENGINEERING RECORD	
DRAWN BY:	PLS
DESIGNED BY:	KL
CHECKED BY:	DAF
APPROVED BY:	DMV
PROJECT#:	UTLBRM5CS



CHURCH-STEEL PROPOSED ROUTE

DWG.NO.: UTLBRM5CS - P	SHEET: 10 OF 23	REV: D
------------------------	-----------------	--------

CADFILE:

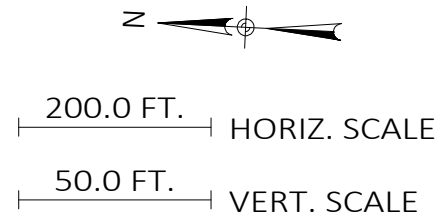


NO.	REVISIONS	DATE	BY	CHK	APR
A	ISSUED FOR INFO ONLY	3/4/15	PLS	DAF	DMV
B	REISSUED FOR INFO ONLY W/LEGEND AND CLEARANCE LINES	3/19/15	PLS	DAF	---
C	ISSUED FOR OE 30% REVIEW INFO	5/14/15	---	---	---
D	REV. LOC'S PROP. OWNER & PERMIT COMMENT; ADD EX. STR #S	5/21/15	PLS	DAF	---

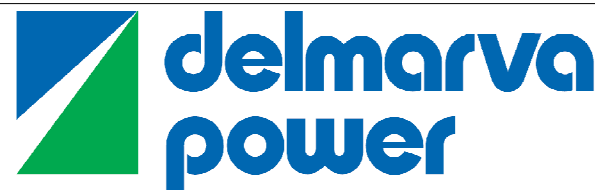


HENKELS & M'COY, INC.
985 JOLLY ROAD
BLUE BELL, PA 19422

- 28' CLEARANCE LINE
- 50' CLEARANCE LINE
- TRANSMISSION LINE CENTERLINE
- RIGHT-OF-WAY LINE
- PROPOSED STEEL POLES (CHURCH STEELE LINE)
- EXISTING WOOD H-FRAMES (CHURCH-STEEL LINE)
- EXISTING LATTICE TOWER (KEENEY-STEEL LINE)



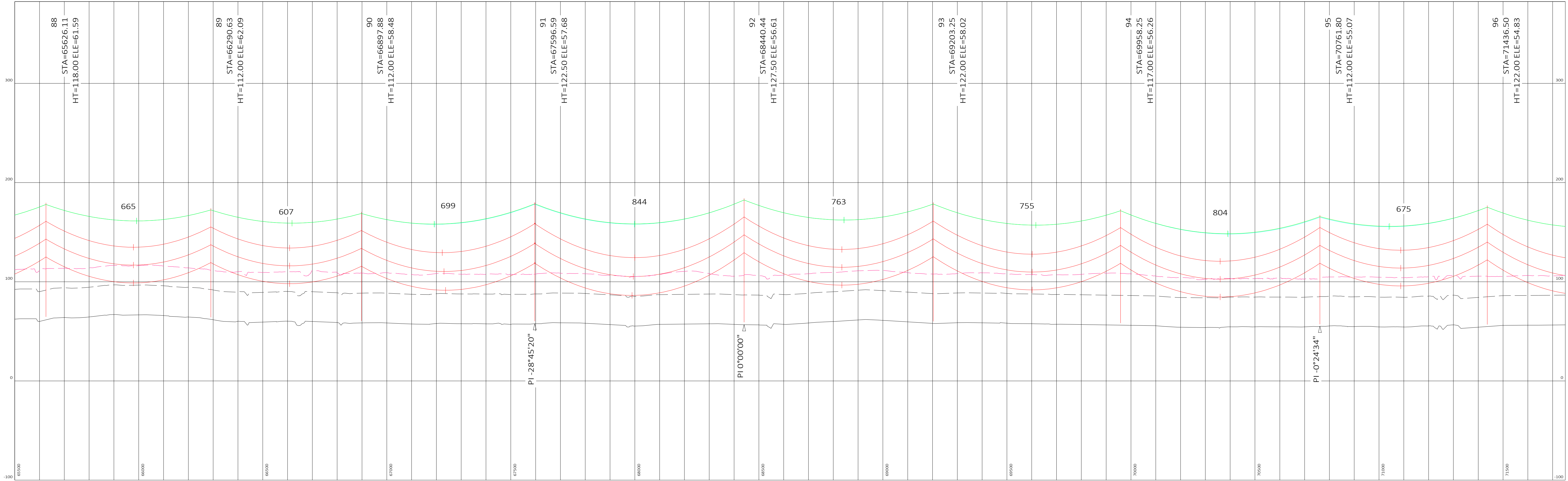
ENGINEERING RECORD	
DRAWN BY:	PLS
DESIGNED BY:	KL
CHECKED BY:	DAF
APPROVED BY:	DMV
PROJECT#:	UTLBRM5CS



CHURCH-STEEL PROPOSED ROUTE

DWG.NO.: UTLBRM5CS - P	SHEET: 11 OF 23	REV: D
------------------------	-----------------	--------

CADFILE:

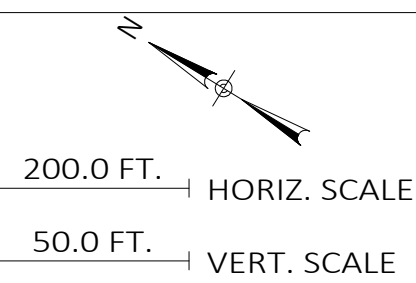


NO.	REVISIONS	DATE	BY	CHK	APR
A	ISSUED FOR INFO ONLY	3/4/15	PLS	DAF	DMV
B	REISSUED FOR INFO ONLY W/LEGEND AND CLEARANCE LINES	3/19/15	PLS	DAF	---
C	ISSUED FOR OE 30% REVIEW INFO	5/14/15	---	---	---
D	REV. LOC'S PROP. OWNER & PERMIT COMMENT; ADD EX. STR #S	5/21/15	PLS	DAF	---



HENKELS & M'COY, INC.
985 JOLLY ROAD
BLUE BELL, PA 19422

- 28' CLEARANCE LINE
- 50' CLEARANCE LINE
- TRANSMISSION LINE CENTERLINE
- RIGHT-OF-WAY LINE
- PROPOSED STEEL POLES (CHURCH-STEEL LINE)
- EXISTING WOOD H-FRAMES (CHURCH-STEEL LINE)
- EXISTING LATTICE TOWER (KEENEY-STEEL LINE)

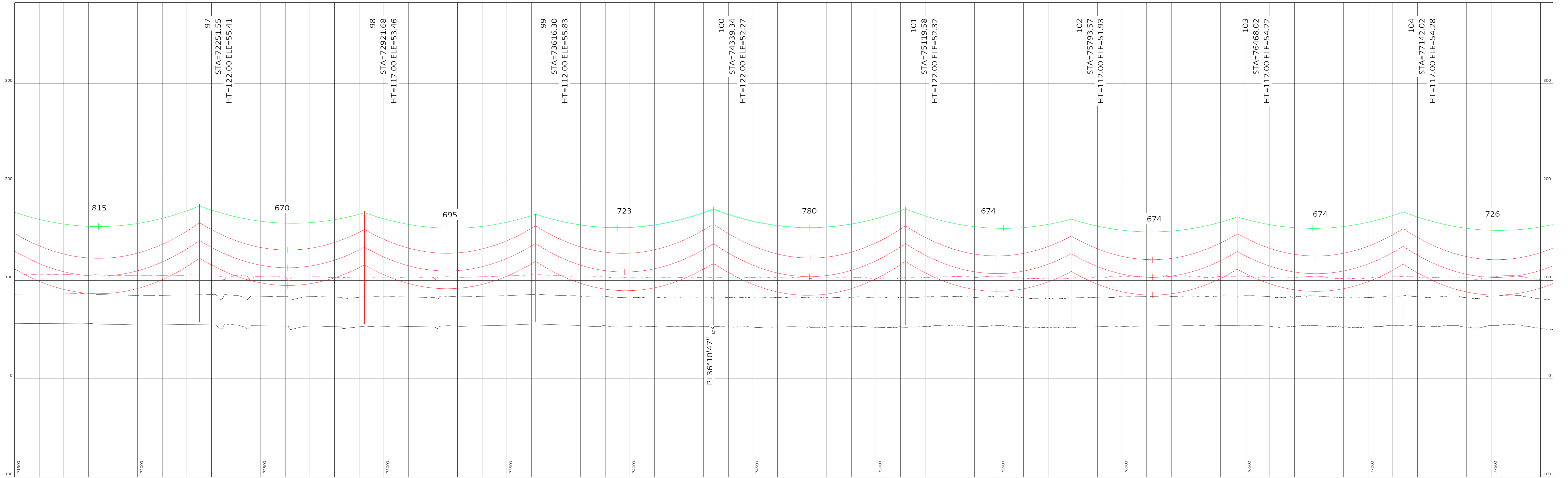


ENGINEERING RECORD	
DRAWN BY:	PLS
DESIGNED BY:	KL
CHECKED BY:	DAF
APPROVED BY:	DMV
PROJECT#:	UTLBRM5CS



CHURCH-STEEL PROPOSED ROUTE

DWG.NO.: UTLBRM5CS - P	SHEET: 12 OF 23	REV: D
------------------------	-----------------	--------

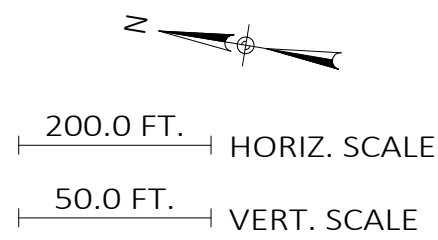


NO.	REVISIONS	DATE	BY	CHK	APR
A	ISSUED FOR INFO ONLY	3/4/15	PLS	DAF	DMV
B	REISSUED FOR INFO ONLY W/LEGEND AND CLEARANCE LINES	3/19/15	PLS	DAF	---
C	ISSUED FOR OE 30% REVIEW INFO	5/14/15	---	---	---
D	REV. LOC'S PROP. OWNER & PERMIT COMMENT; ADD EX. STR #S	5/21/15	PLS	DAF	---



HENKELS & M'COY, INC.
985 JOLLY ROAD
BLUE BELL, PA 19422

- 28' CLEARANCE LINE
- 50' CLEARANCE LINE
- TRANSMISSION LINE CENTERLINE
- RIGHT-OF-WAY LINE
- PROPOSED STEEL POLES (CHURCH STEELE LINE)
- EXISTING WOOD H-FRAMES (CHURCH-STEEL LINE)
- EXISTING LATTICE TOWER (KEENEY-STEEL LINE)



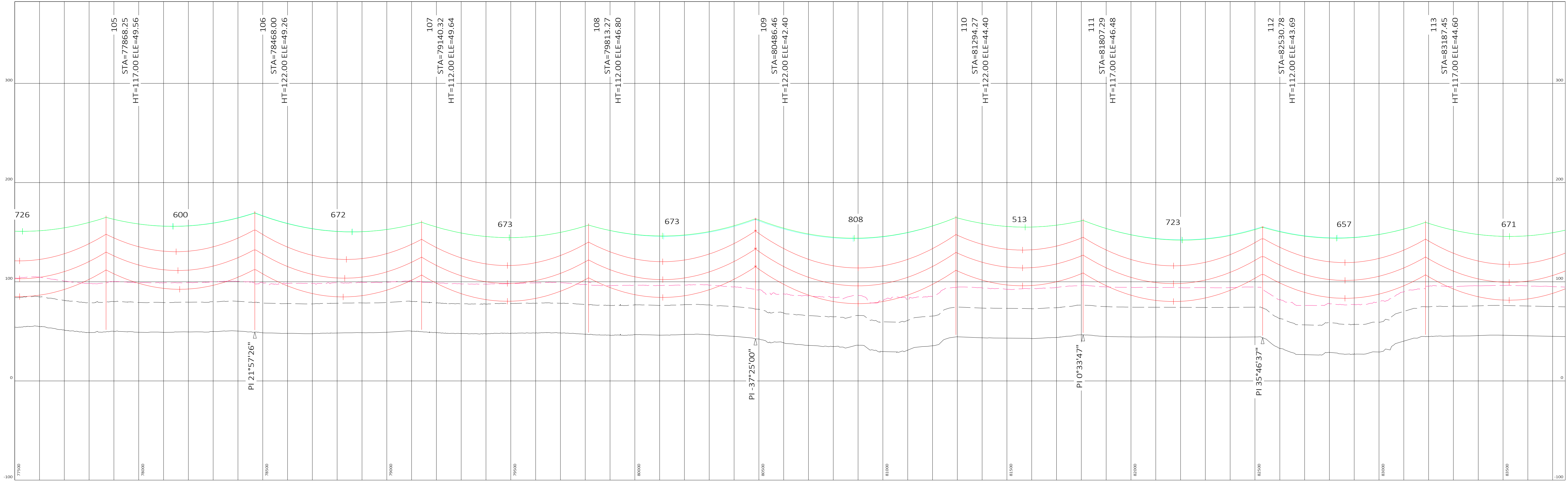
ENGINEERING RECORD	
DRAWN BY:	PLS
DESIGNED BY:	KL
CHECKED BY:	DAF
APPROVED BY:	DMV
PROJECT#:	UTLBRM5CS



CHURCH-STEEL PROPOSED ROUTE

DWG.NO.: UTLBRM5CS - P	SHEET: 13 OF 23	REV: D
------------------------	-----------------	--------

CADFILE:

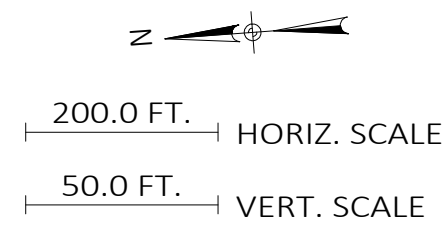


NO.	REVISIONS	DATE	BY	CHK	APR
A	ISSUED FOR INFO ONLY	3/4/15	PLS	DAF	DMV
B	REISSUED FOR INFO ONLY W/LEGEND AND CLEARANCE LINES	3/19/15	PLS	DAF	---
C	ISSUED FOR OE 30% REVIEW INFO	5/14/15	---	---	---
D	REV. LOC'S PROP. OWNER & PERMIT COMMENT; ADD EX. STR #S	5/21/15	PLS	DAF	---

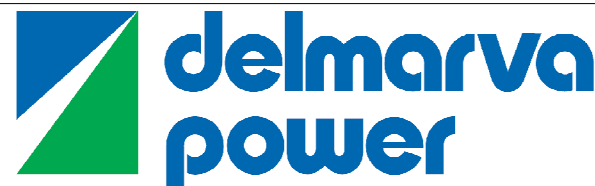


HENKELS & M'COY, INC.
985 JOLLY ROAD
BLUE BELL, PA 19422

- 28' CLEARANCE LINE
- 50' CLEARANCE LINE
- TRANSMISSION LINE CENTERLINE
- RIGHT-OF-WAY LINE
- PROPOSED STEEL POLES (CHURCH STEELE LINE)
- EXISTING WOOD H-FRAMES (CHURCH-STEEL LINE)
- EXISTING LATTICE TOWER (KEENEY-STEEL LINE)



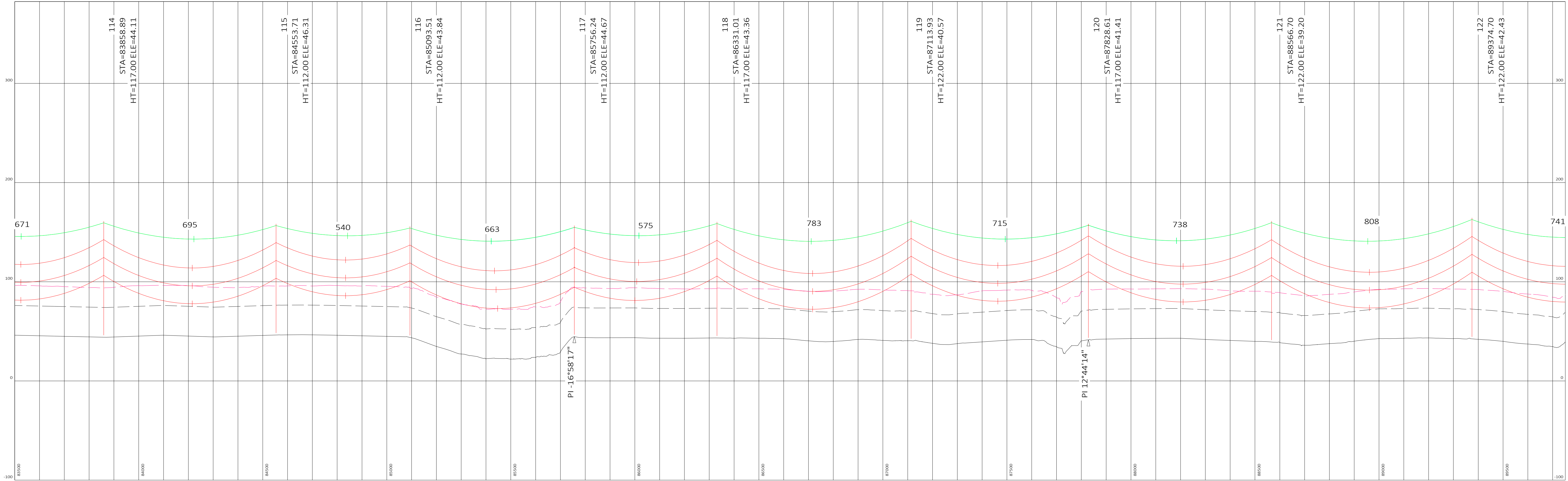
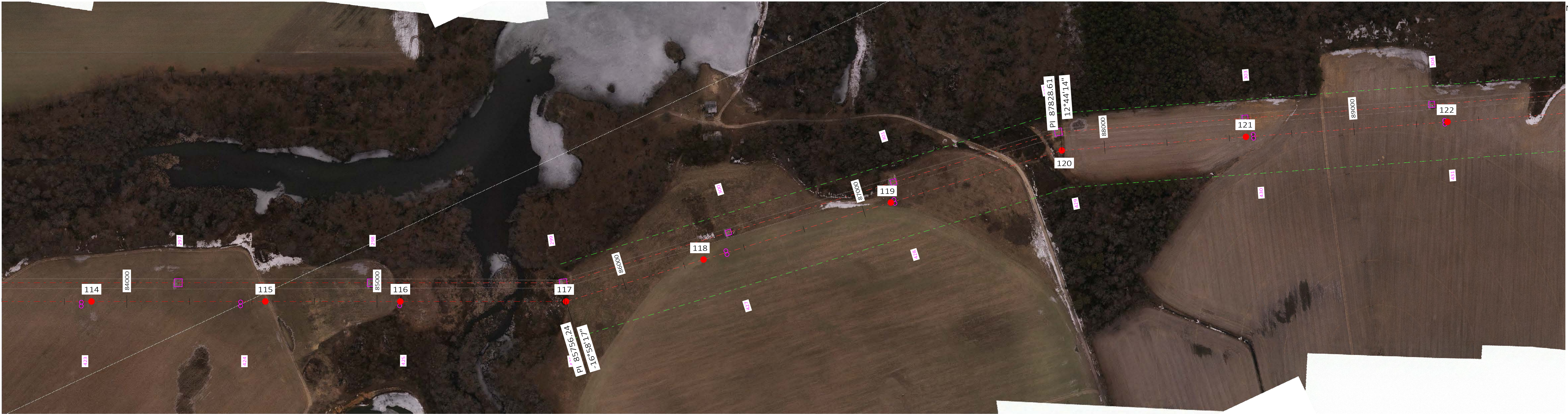
ENGINEERING RECORD	
DRAWN BY:	PLS
DESIGNED BY:	KL
CHECKED BY:	DAF
APPROVED BY:	DMV
PROJECT#:	UTLBRM5CS



CHURCH-STEEL PROPOSED ROUTE

DWG.NO.: UTLBRM5CS - P SHEET: 14 OF 23 REV: D

CADFILE:

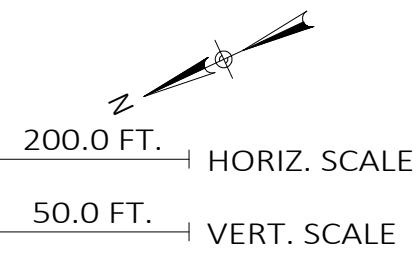


NO.	REVISIONS	DATE	BY	CHK	APR
A	ISSUED FOR INFO ONLY	3/4/15	PLS	DAF	DMV
B	REISSUED FOR INFO ONLY W/LEGEND AND CLEARANCE LINES	3/19/15	PLS	DAF	---
C	ISSUED FOR OE 30% REVIEW INFO	5/14/15	---	---	---
D	REV. LOC'S PROP. OWNER & PERMIT COMMENT; ADD EX. STR #S	5/21/15	PLS	DAF	---

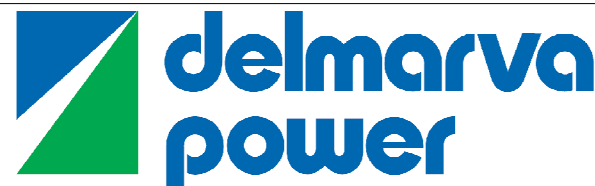


HENKELS & M'COY, INC.
985 JOLLY ROAD
BLUE BELL, PA 19422

- 28' CLEARANCE LINE
- 50' CLEARANCE LINE
- TRANSMISSION LINE CENTERLINE
- RIGHT-OF-WAY LINE
- PROPOSED STEEL POLES (CHURCH STEELE LINE)
- EXISTING WOOD H-FRAMES (CHURCH-STEEL LINE)
- EXISTING LATTICE TOWER (KEENEY-STEEL LINE)



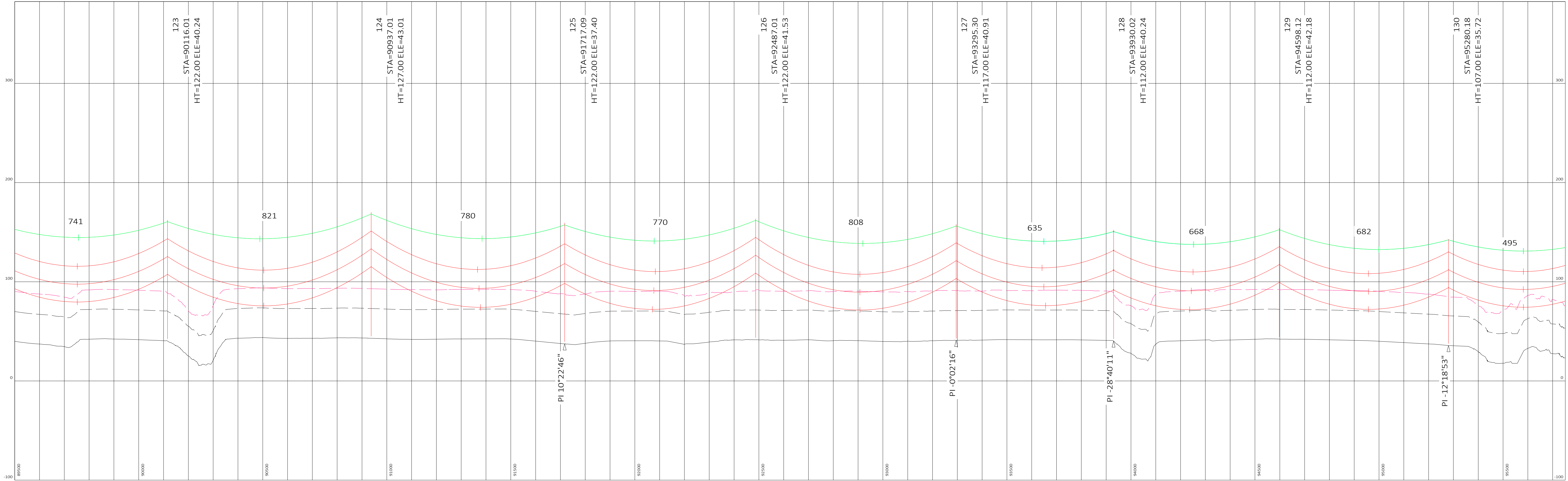
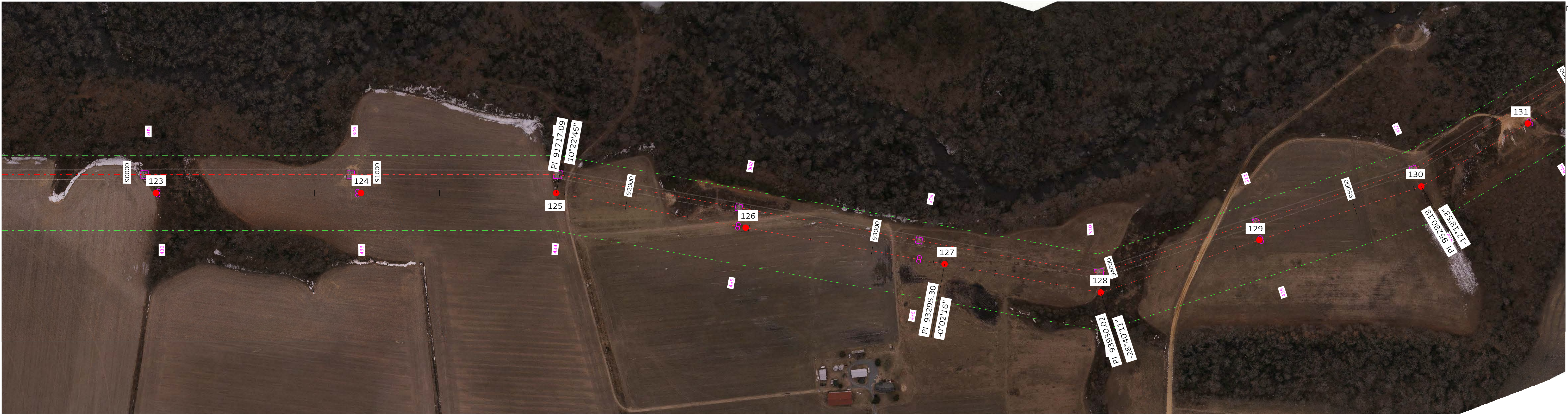
ENGINEERING RECORD	
DRAWN BY:	PLS
DESIGNED BY:	KL
CHECKED BY:	DAF
APPROVED BY:	DMV
PROJECT#:	UTLBRM5CS



CHURCH-STEEL PROPOSED ROUTE

DWG.NO.: UTLBRM5CS - P SHEET: 15 OF 23 REV: D

CADFILE:

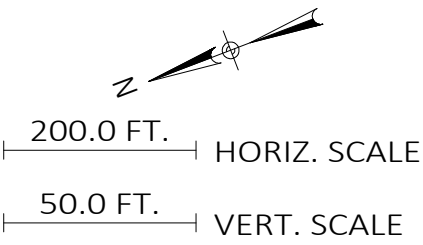


NO.	REVISIONS	DATE	BY	CHK	APR
A	ISSUED FOR INFO ONLY	3/4/15	PLS	DAF	DMV
B	REISSUED FOR INFO ONLY W/LEGEND AND CLEARANCE LINES	3/19/15	PLS	DAF	---
C	ISSUED FOR OE 30% REVIEW INFO	5/14/15	---	---	---
D	REV. LOC'S PROP. OWNER & PERMIT COMMENT; ADD EX. STR #S	5/21/15	PLS	DAF	---

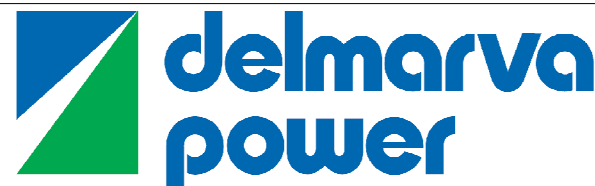


HENKELS & M'COY, INC.
985 JOLLY ROAD
BLUE BELL, PA 19422

- 28' CLEARANCE LINE
- 50' CLEARANCE LINE
- TRANSMISSION LINE CENTERLINE
- RIGHT-OF-WAY LINE
- PROPOSED STEEL POLES (CHURCH-STEELE LINE)
- EXISTING WOOD H-FRAMES (CHURCH-STEELE LINE)
- EXISTING LATTICE TOWER (KEENEY-STEELE LINE)



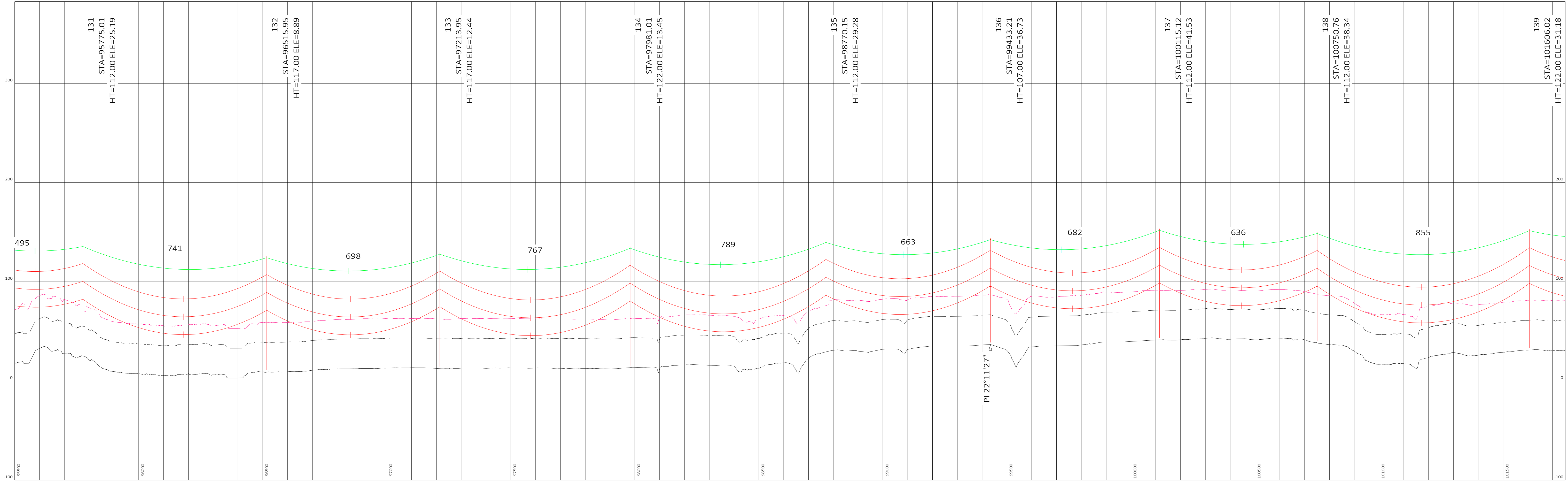
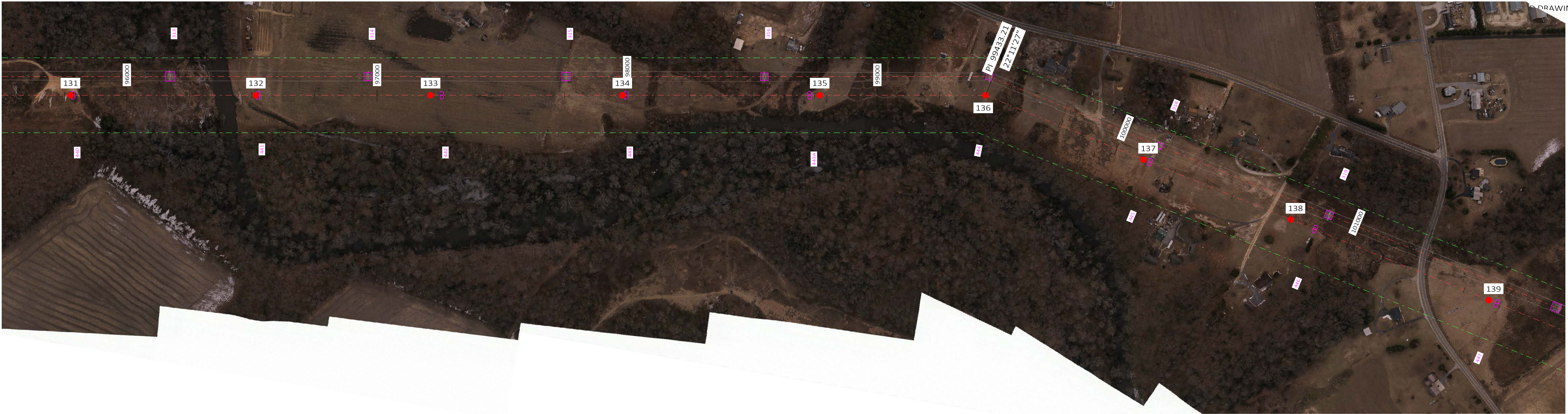
ENGINEERING RECORD	
DRAWN BY:	PLS
DESIGNED BY:	KL
CHECKED BY:	DAF
APPROVED BY:	DMV
PROJECT#:	UTLBRM5CS



CHURCH-STEELE PROPOSED ROUTE

DWG.NO.: UTLBRM5CS - P SHEET: 16 OF 23 REV: D

CADFILE:

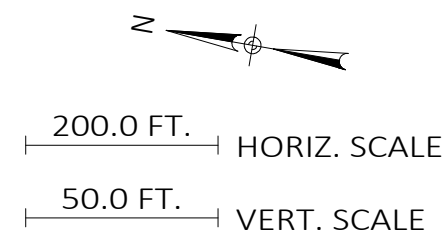


NO.	REVISIONS	DATE	BY	CHK	APR
A	ISSUED FOR INFO ONLY	3/4/15	PLS	DAF	DMV
B	REISSUED FOR INFO ONLY W/LEGEND AND CLEARANCE LINES	3/19/15	PLS	DAF	---
C	ISSUED FOR OE 30% REVIEW INFO	5/14/15	---	---	---
D	REV. LOC'S PROP. OWNER & PERMIT COMMENT; ADD EX. STR #S	5/21/15	PLS	DAF	---

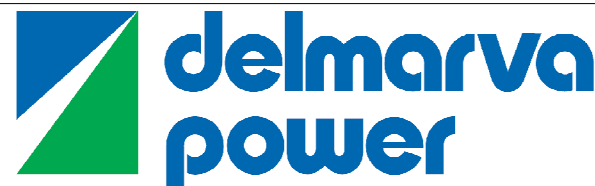


HENKELS & M'COY, INC.
985 JOLLY ROAD
BLUE BELL, PA 19422

- 28' CLEARANCE LINE
- 50' CLEARANCE LINE
- TRANSMISSION LINE CENTERLINE
- RIGHT-OF-WAY LINE
- PROPOSED STEEL POLES (CHURCH STEELE LINE)
- EXISTING WOOD H-FRAMES (CHURCH-STEEL LINE)
- EXISTING LATTICE TOWER (KEENEY-STEEL LINE)



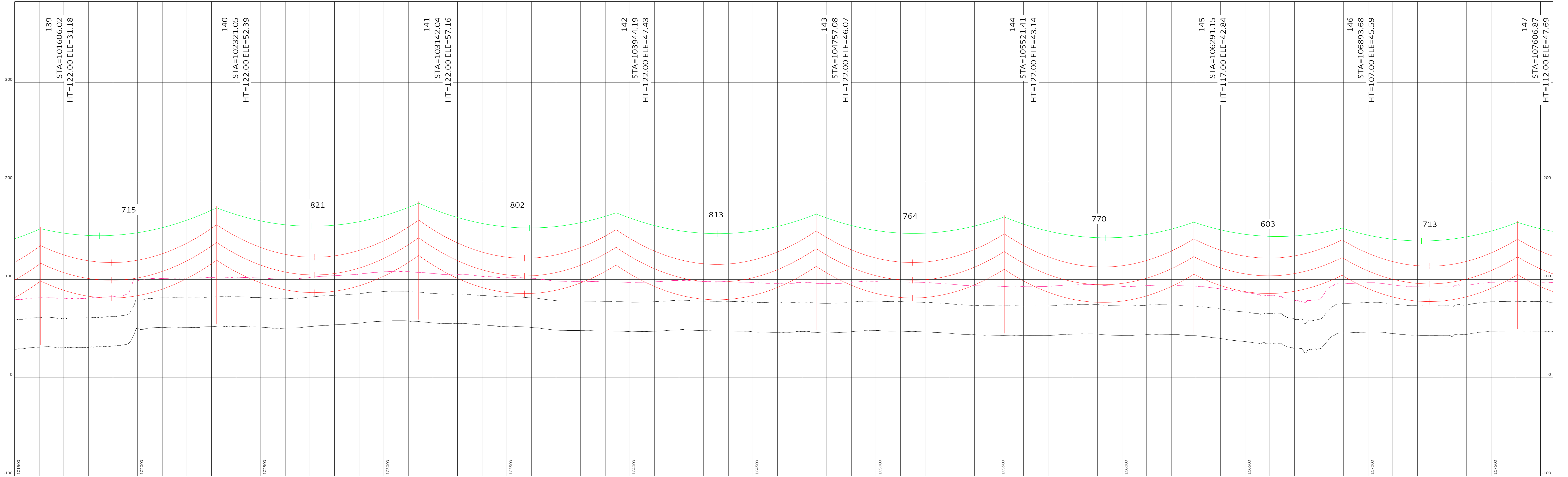
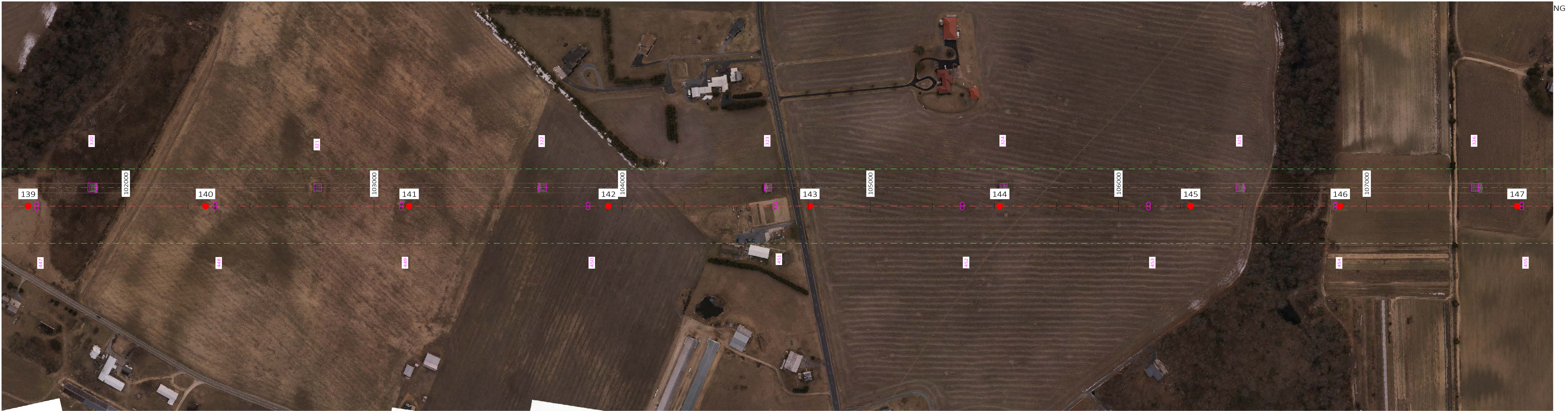
ENGINEERING RECORD	
DRAWN BY:	PLS
DESIGNED BY:	KL
CHECKED BY:	DAF
APPROVED BY:	DMV
PROJECT#:	UTLBRM5CS



CHURCH-STEEL PROPOSED ROUTE

DWG.NO.: UTLBRM5CS - P SHEET: 17 OF 23 REV: D

CADFILE:

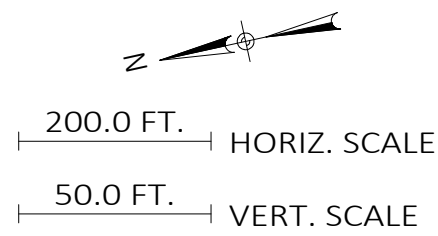


NO.	REVISIONS	DATE	BY	CHK	APR
A	ISSUED FOR INFO ONLY	3/4/15	PLS	DAF	DMV
B	REISSUED FOR INFO ONLY W/LEGEND AND CLEARANCE LINES	3/19/15	PLS	DAF	---
C	ISSUED FOR OE 30% REVIEW INFO	5/14/15	---	---	---
D	REV. LOC'S PROP. OWNER & PERMIT COMMENT; ADD EX. STR #S	5/21/15	PLS	DAF	---

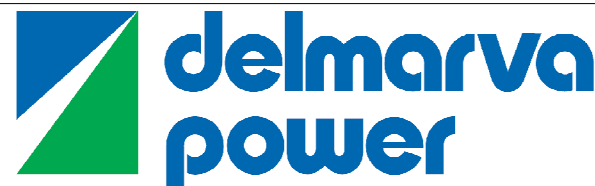


HENKELS & M'COY, INC.
985 JOLLY ROAD
BLUE BELL, PA 19422

- 28' CLEARANCE LINE
- 50' CLEARANCE LINE
- TRANSMISSION LINE CENTERLINE
- RIGHT-OF-WAY LINE
- PROPOSED STEEL POLES (CHURCH STEELE LINE)
- EXISTING WOOD H-FRAMES (CHURCH-STEEL LINE)
- EXISTING LATTICE TOWER (KEENEY-STEEL LINE)



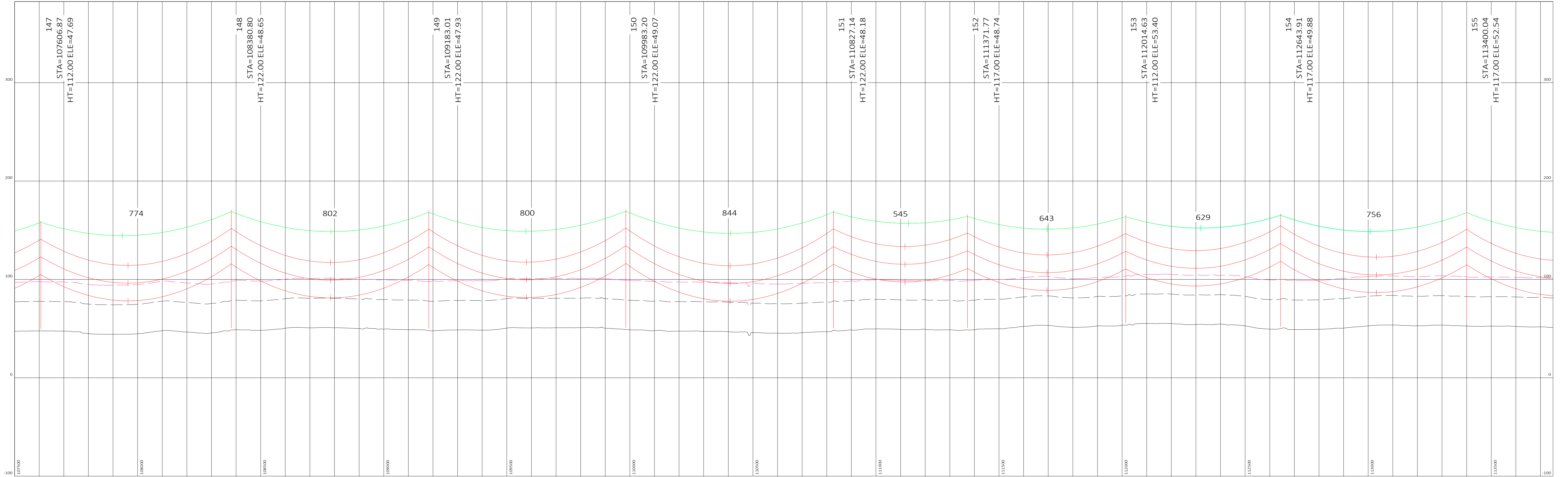
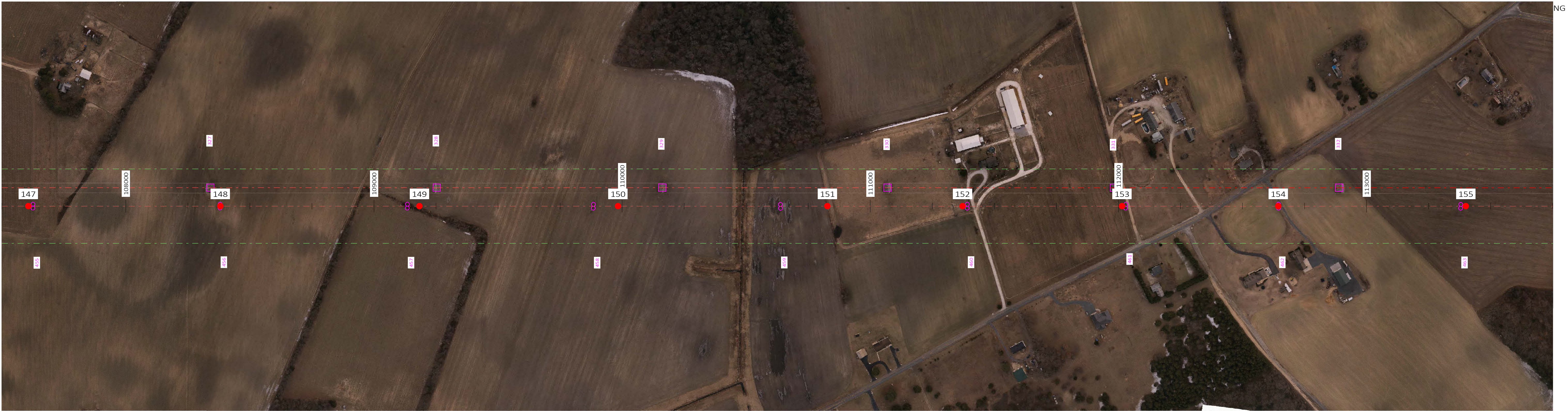
ENGINEERING RECORD	
DRAWN BY:	PLS
DESIGNED BY:	KL
CHECKED BY:	DAF
APPROVED BY:	DMV
PROJECT#:	UTLBRM5CS



CHURCH-STEEL PROPOSED ROUTE

DWG.NO.: UTLBRM5CS - P	SHEET: 18 OF 23	REV: D
------------------------	-----------------	--------

CADFILE:

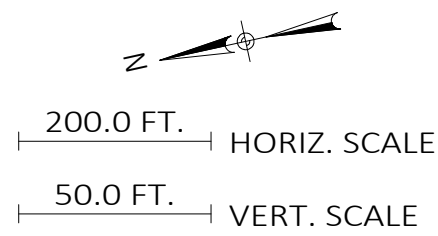


NO.	REVISIONS	DATE	BY	CHK	APR
A	ISSUED FOR INFO ONLY	3/4/15	PLS	DAF	DMV
B	REISSUED FOR INFO ONLY W/LEGEND AND CLEARANCE LINES	3/19/15	PLS	DAF	---
C	ISSUED FOR OE 30% REVIEW INFO	5/14/15	---	---	---
D	REV. LOC'S PROP. OWNER & PERMIT COMMENT; ADD EX. STR #S	5/21/15	PLS	DAF	---



HENKELS & M'COY, INC.
985 JOLLY ROAD
BLUE BELL, PA 19422

- 28' CLEARANCE LINE
- 50' CLEARANCE LINE
- TRANSMISSION LINE CENTERLINE
- RIGHT-OF-WAY LINE
- PROPOSED STEEL POLES (CHURCH-STEEL LINE)
- EXISTING WOOD H-FRAMES (CHURCH-STEEL LINE)
- EXISTING LATTICE TOWER (KEENEY-STEEL LINE)



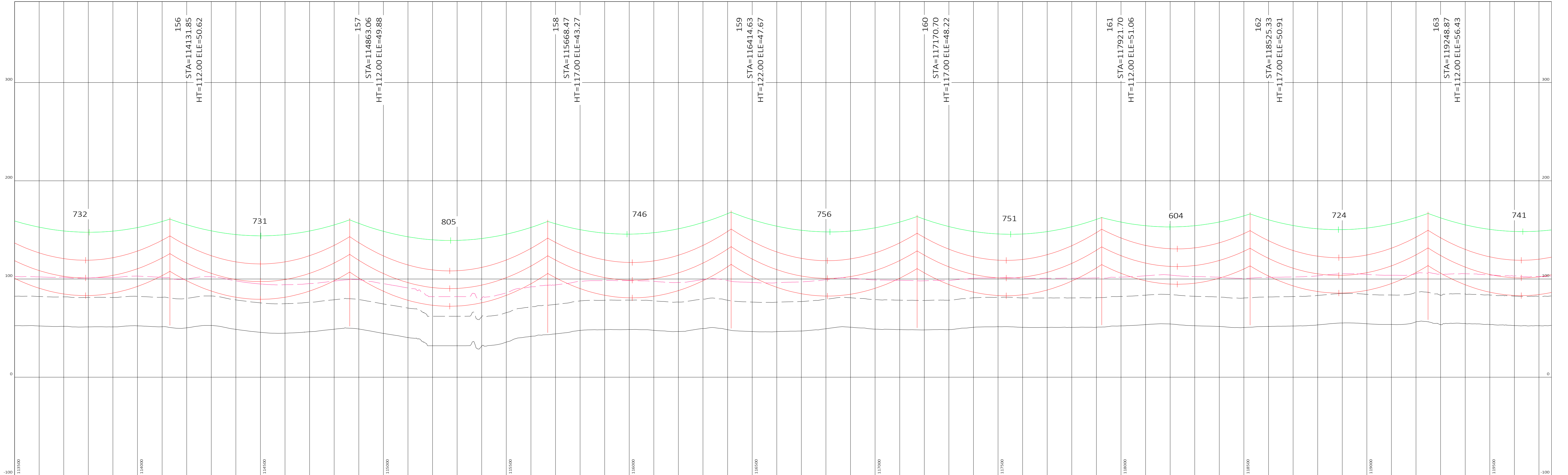
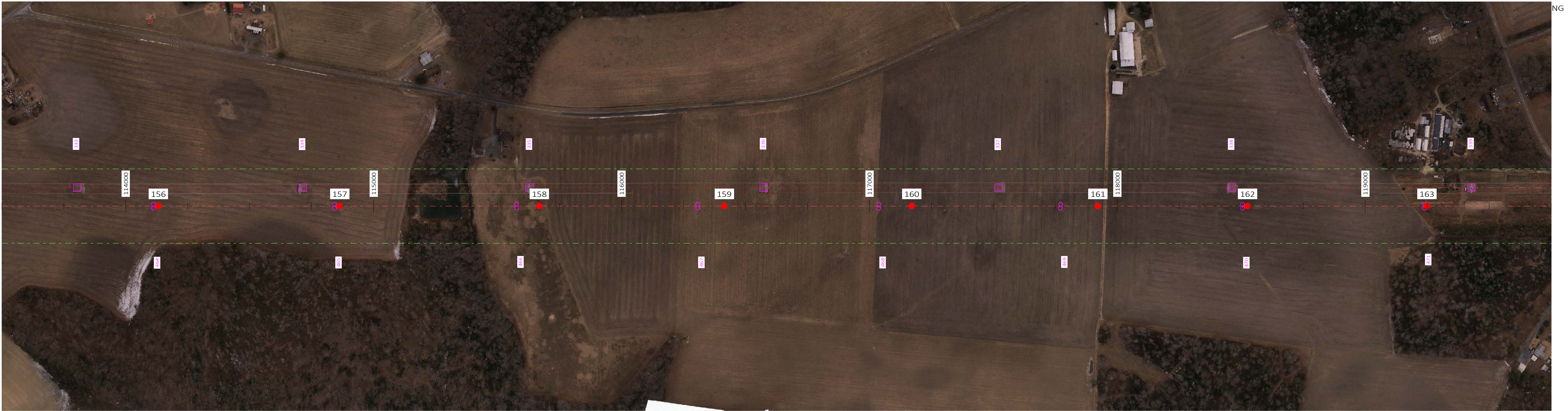
ENGINEERING RECORD	
DRAWN BY:	PLS
DESIGNED BY:	KL
CHECKED BY:	DAF
APPROVED BY:	DMV
PROJECT#:	UTLBRM5CS



CHURCH-STEEL PROPOSED ROUTE

DWG.NO.: UTLBRM5CS - P	SHEET: 19 OF 23	REV: D
------------------------	-----------------	--------

CADFILE:

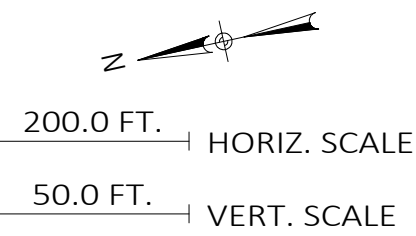


NO.	REVISIONS	DATE	BY	CHK	APR
A	ISSUED FOR INFO ONLY	3/4/15	PLS	DAF	DMV
B	REISSUED FOR INFO ONLY W/LEGEND AND CLEARANCE LINES	3/19/15	PLS	DAF	---
C	ISSUED FOR OE 30% REVIEW INFO	5/14/15	---	---	---
D	REV. LOC'S PROP. OWNER & PERMIT COMMENT; ADD EX. STR #5	5/21/15	PLS	DAF	---

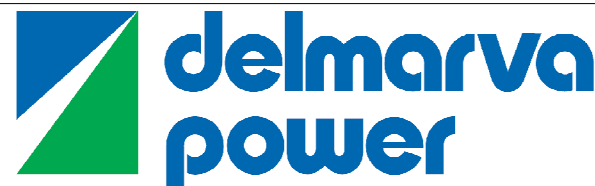


HENKELS & M'COY, INC.
985 JOLLY ROAD
BLUE BELL, PA 19422

- 28' CLEARANCE LINE
- 50' CLEARANCE LINE
- TRANSMISSION LINE CENTERLINE
- RIGHT-OF-WAY LINE
- PROPOSED STEEL POLES (CHURCH STEELE LINE)
- EXISTING WOOD H-FRAMES (CHURCH-STEEL LINE)
- EXISTING LATTICE TOWER (KEENEY-STEEL LINE)



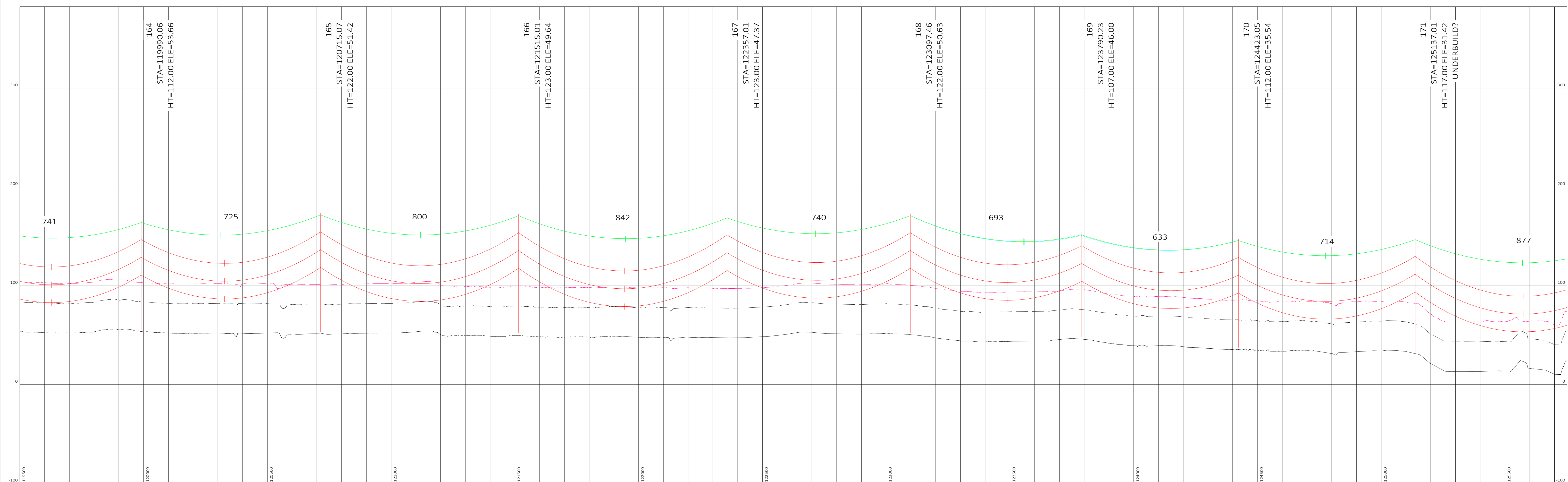
ENGINEERING RECORD	
DRAWN BY:	PLS
DESIGNED BY:	KL
CHECKED BY:	DAF
APPROVED BY:	DMV
PROJECT#:	UTLBRM5CS



CHURCH-STEEL PROPOSED ROUTE

DWG.NO.: UTLBRM5CS - P	SHEET: 20 OF 23	REV: D
------------------------	-----------------	--------

CADFILE:

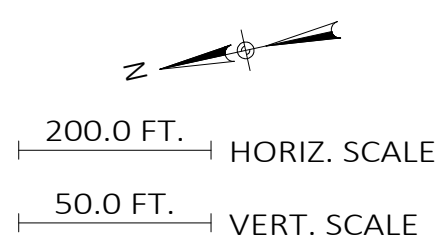


NO.	REVISIONS	DATE	BY	CHK	APR
A	ISSUED FOR INFO ONLY	3/4/15	PLS	DAF	DMV
B	REISSUED FOR INFO ONLY W/LEGEND AND CLEARANCE LINES	3/19/15	PLS	DAF	---
C	ISSUED FOR OE 30% REVIEW INFO	5/14/15	---	---	---
D	REV. LOC'S PROP. OWNER & PERMIT COMMENT; ADD EX. STR #5	5/21/15	PLS	DAF	---

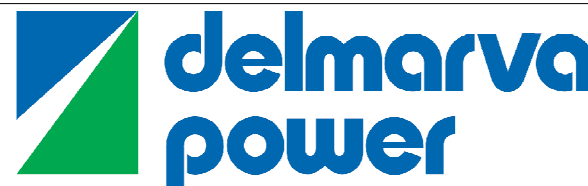


HENKELS & M'COY, Inc.
985 JOLLY ROAD
BLUE BELL, PA 19422

- 28' CLEARANCE LINE
 - - - - - 50' CLEARANCE LINE
 --- TRANSMISSION LINE CENTERLINE
 --- RIGHT-OF-WAY LINE
 ● PROPOSED STEEL POLES (CHURCH STEELE LINE)
 ■ EXISTING WOOD H-FRAMES (CHURCH-STEEL LINE)
 ■ EXISTING LATTICE TOWER (KEENEY-STEEL LINE)



ENGINEERING RECORD	
DRAWN BY:	PLS
DESIGNED BY:	KL
CHECKED BY:	DAF
APPROVED BY:	DMV
PROJECT#: UTILBRM5CS	



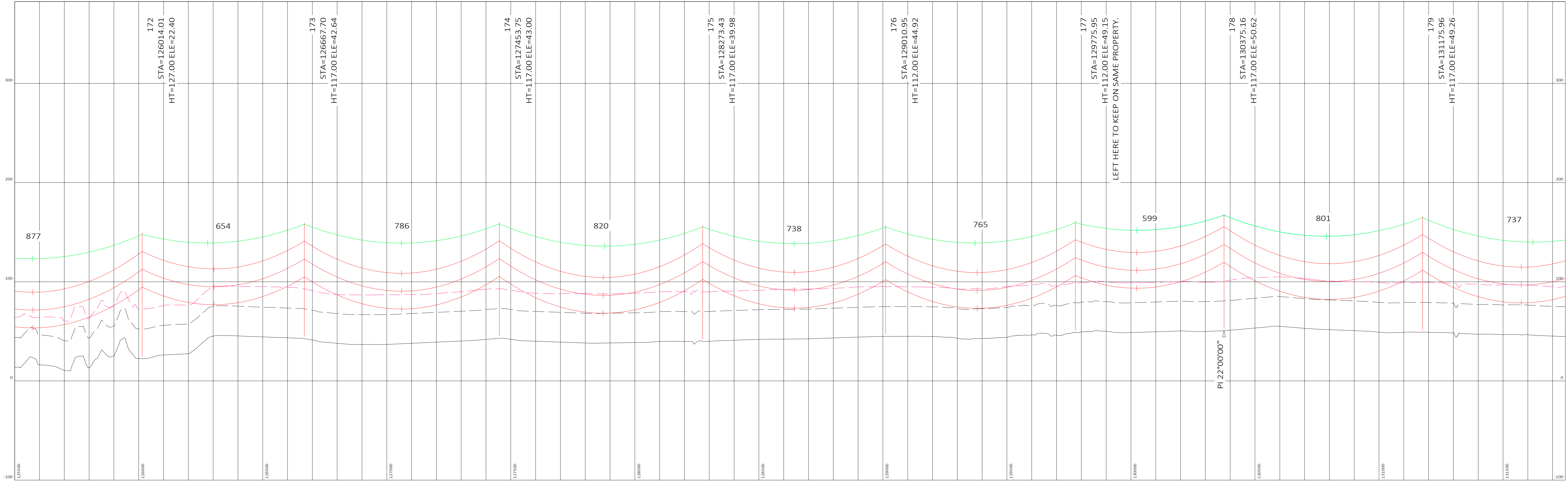
CHURCH-STEELE PROPOSED ROUTE

DWG.NO.: UTLBRM5CS - P

SHEET: 21 OF 23

REV:

CADFILE:

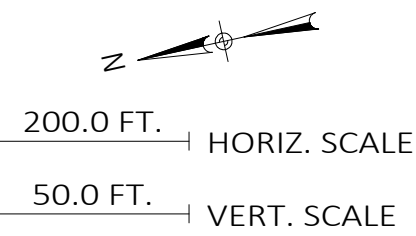


NO.	REVISIONS	DATE	BY	CHK	APR
A	ISSUED FOR INFO ONLY	3/4/15	PLS	DAF	DMV
B	REISSUED FOR INFO ONLY W/LEGEND AND CLEARANCE LINES	3/19/15	PLS	DAF	---
C	ISSUED FOR OE 30% REVIEW INFO	5/14/15	---	---	---
D	REV. LOC'S PROP. OWNER & PERMIT COMMENT; ADD EX. STR #S	5/21/15	PLS	DAF	---

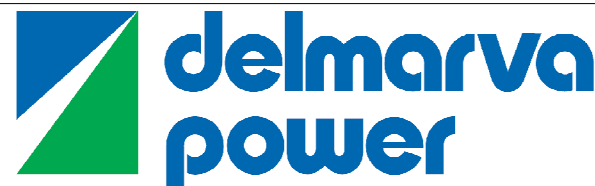


HENKELS & M'COY, INC.
985 JOLLY ROAD
BLUE BELL, PA 19422

- 28' CLEARANCE LINE
- 50' CLEARANCE LINE
- TRANSMISSION LINE CENTERLINE
- RIGHT-OF-WAY LINE
- PROPOSED STEEL POLES (CHURCH STEELE LINE)
- EXISTING WOOD H-FRAMES (CHURCH-STEEL LINE)
- EXISTING LATTICE TOWER (KEENEY-STEEL LINE)



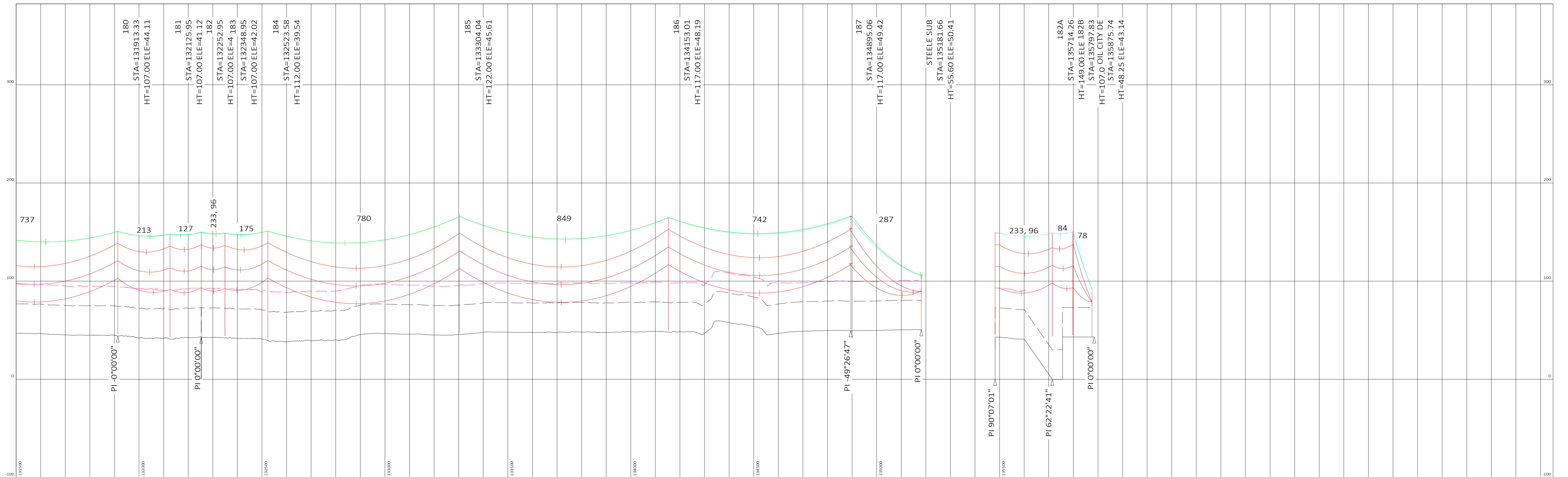
ENGINEERING RECORD	
DRAWN BY:	PLS
DESIGNED BY:	KL
CHECKED BY:	DAF
APPROVED BY:	DMV
PROJECT#:	UTLBRM5CS






CHURCH-STEEL PROPOSED ROUTE

DWG.NO.: UTLBRM5CS - P SHEET: 22 OF 23 REV: D

CADFILE:



NO.	REVISIONS	DATE	BY	CHK	APR	<div><div>H&M ENGINEERS & CONTRACTORS</div><div>HENKELS & MCCOY, INC. 985 JOLLY ROAD BLUE BELL, PA 19422</div></div>	<div>----- 28' CLEARANCE LINE ----- 50' CLEARANCE LINE ----- TRANSMISSION LINE CENTERLINE ----- RIGHT-OF-WAY LINE <div><div>●</div> PROPOSED STEEL POLES (CHURCH STEELE LINE) <div>○</div> EXISTING WOOD H-FRAMES (CHURCH-STEEL LINE) <div>□</div> EXISTING LATTICE TOWER (KEENEY-STEEL LINE)</div></div>	<div><div>200.0 FT. = HORIZ. SCALE 50.0 FT. = VERT. SCALE</div></div>	ENGINEERING RECORD		<div><div>CHURCH-STEEL PROPOSED ROUTE</div></div>	<div>DWG.NO.: UTILBRM5CS - P SHEET: 23 OF 23 REV: D</div>
A	ISSUED FOR INFO ONLY	3/4/15	PLS	DAF	DMV				DRAWN BY: PLS DESIGNED BY: KL CHECKED BY: DAF APPROVED BY: DMV			
B	REISSUED FOR INFO ONLY W/LEGEND AND CLEARANCE LINES	3/19/15	PLS	DAF	---							
C	ISSUED FOR OE 30% REVIEW INFO	5/14/15	---	---	---							
D	REV. LOC'S PROP. OWNER & PERMIT COMMENT; ADD EX. STR #5	5/21/15	PLS	DAF	---							

CADFILE: