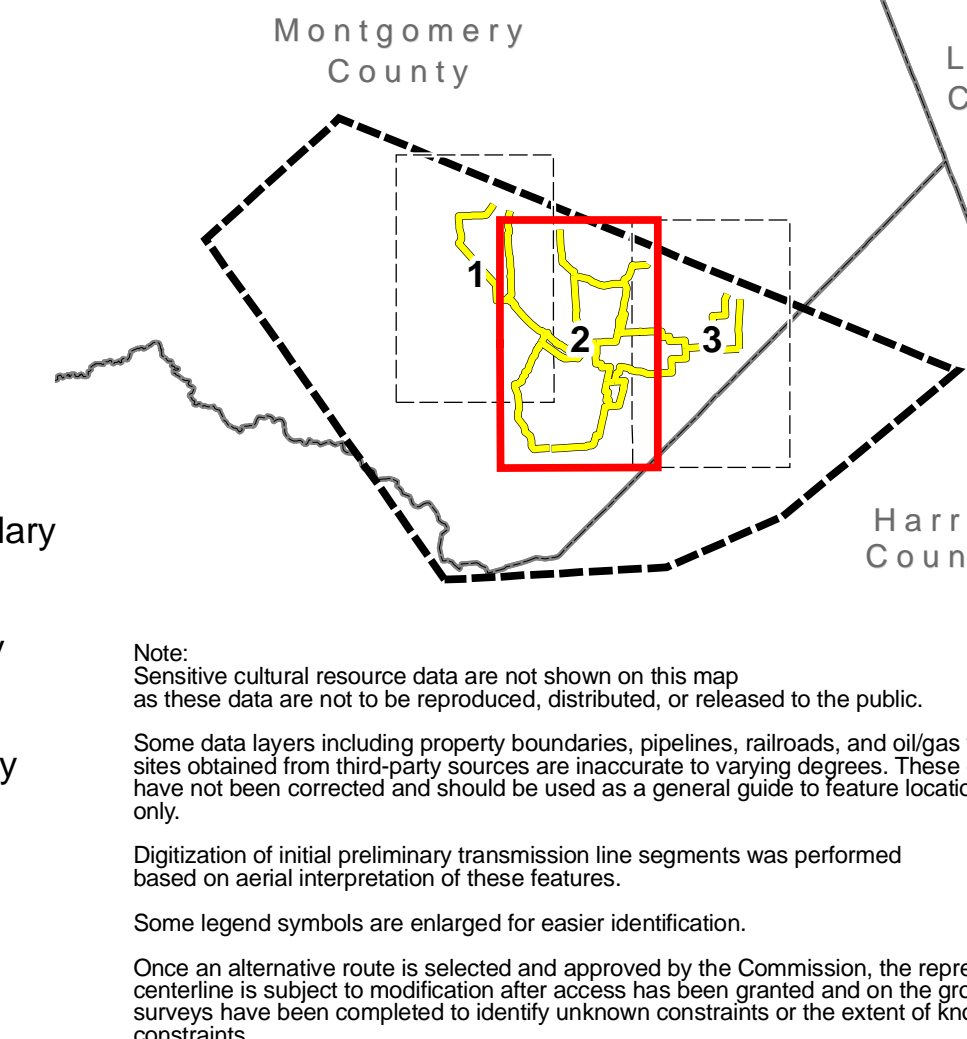


Legend

- Project Components**
 - Study Area
 - Alternative Cut-in Location
 - Preliminary Alternative Segment, Node, and Label
 - Preliminary Alternative Segment Utilizing Existing Distribution Line ROW
 - Proposed Alternative Substation
 - 310 foot Notification Zone
 - Display Board Machine
- Existing Utility Features**
 - Existing Substation
 - 138 kV Transmission Line
 - 230 kV Transmission Line
 - Distribution Power Line
 - Oil / Gas Well
 - Oil / Gas Pipeline
- Land Use Features**
 - Cemetery
 - Church
 - School
 - Habitable Structures within 310 Feet of the Proposed Centerline
 - Water Well
 - Official Texas Historical Marker

- Transportation Features**
 - Public Airport
 - Interstate Highway
 - US Highway
 - State Highway
 - Farm to Market Road
 - Local Road
 - Railroad
- Hydrologic Features**
 - River / Stream
 - Waterbody
- Administrative Features**
 - Municipal Boundary
 - Parcel Boundary
 - County Boundary
- Other Features**
 - AM Communication Tower
 - FM, Cellular, or Microwave Communication Tower
 - National Register of Historic Places
 - Park / Recreation Area
 - Land Conservancy Preserve



2

MILLBEND 138 kV TRANSMISSION LINE AND SUBSTATION PROJECT

PRELIMINARY ALTERNATIVE SEGMENTS WITH ENVIRONMENTAL CONSTRAINTS

Date: 02/10/2020

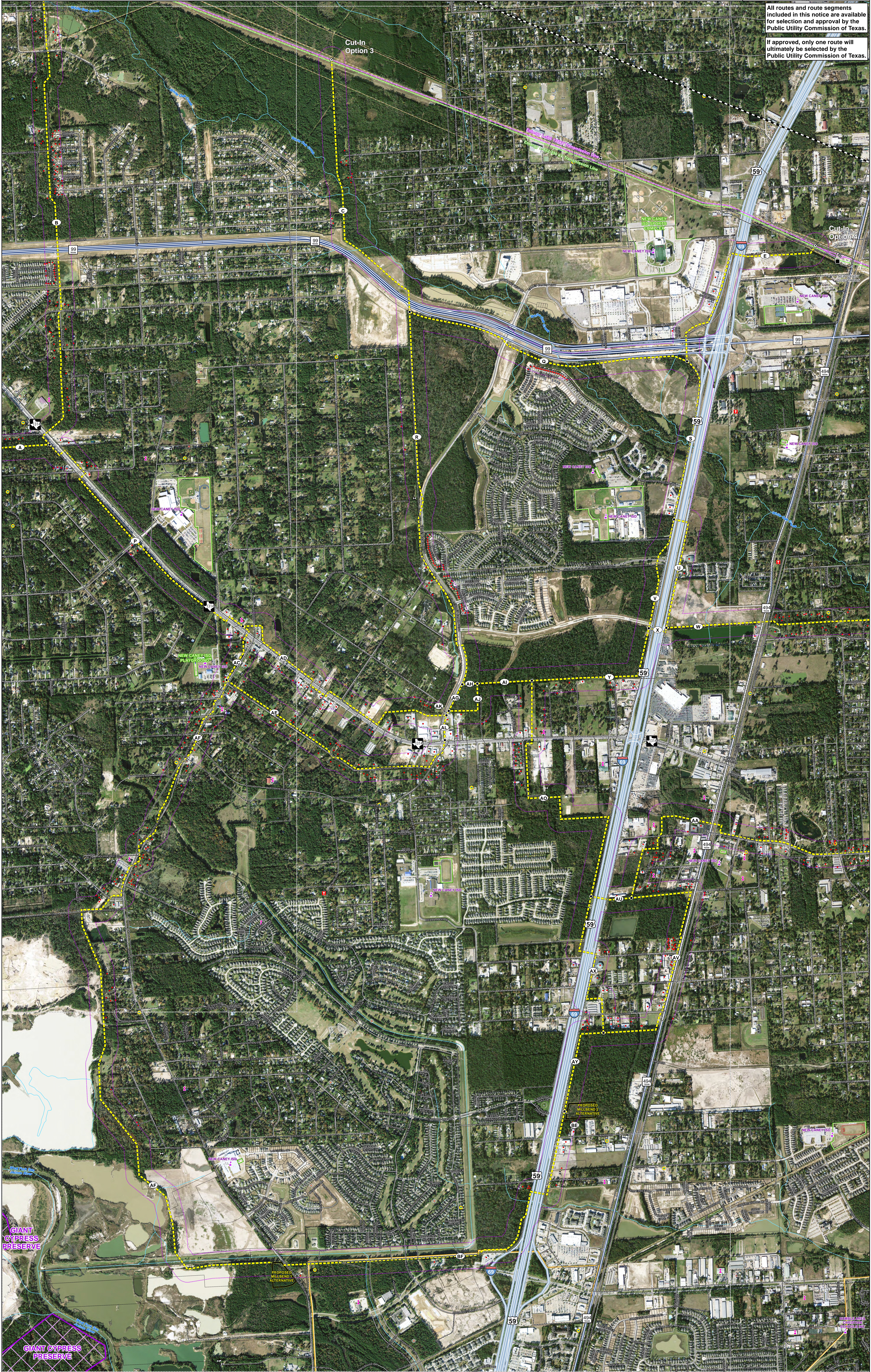
POWER ENGINEERS

Entergy

0 500 1,000 1,500 2,000 Feet

0 0.25 0.5 Miles

Preliminary and Subject to Change



All routes and route segments included in this notice are available for selection and approval by the Public Utility Commission of Texas.

If approved, only one route will ultimately be selected by the Public Utility Commission of Texas.