
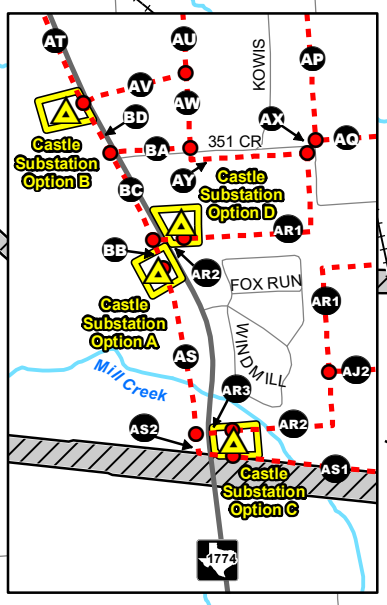
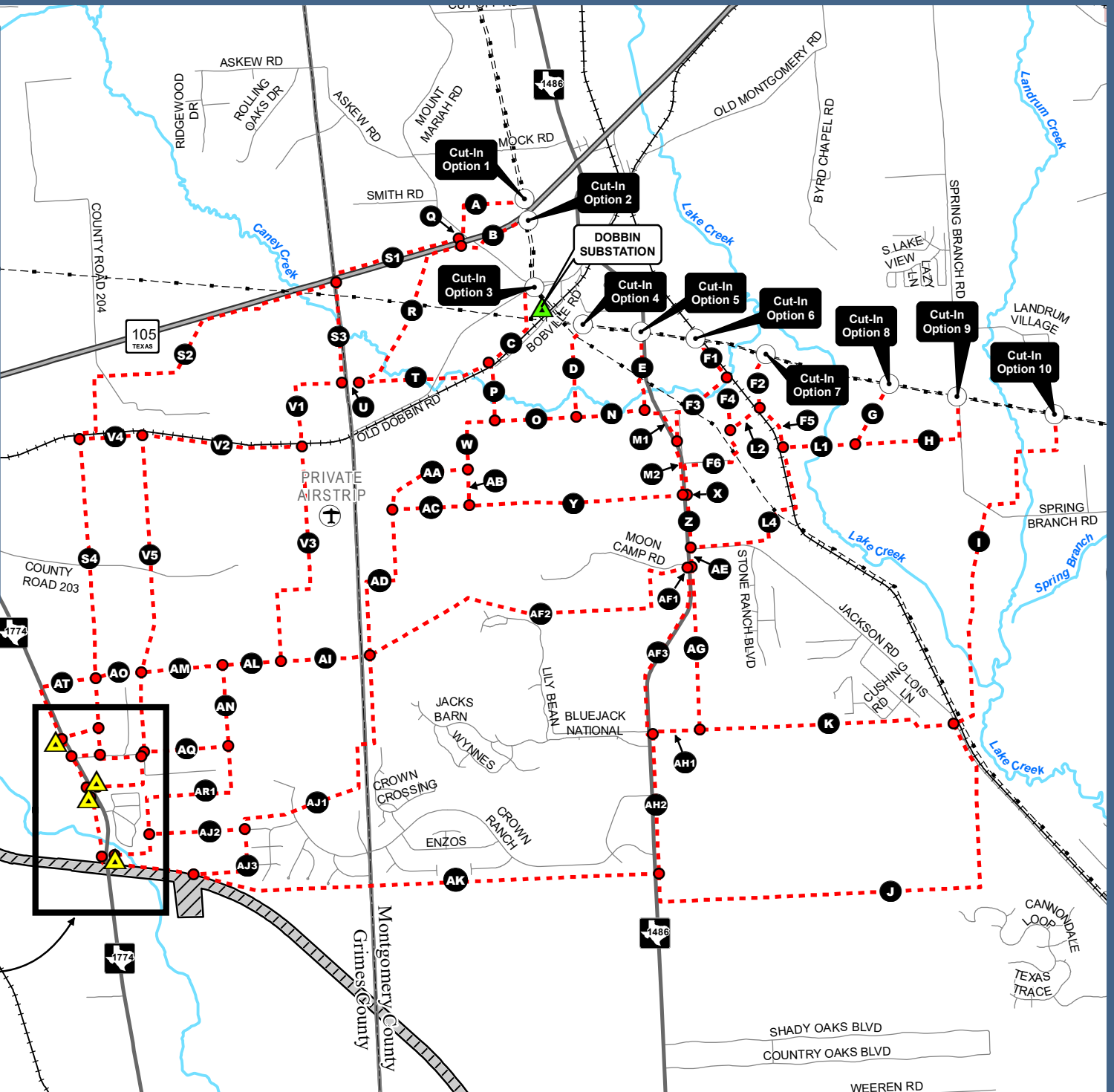


Existing Entergy Substation
Proposed Alternative Substation Site and Site Boundary
Alternative Cut-In Location
Preliminary Alternative Route Node
Preliminary Alternative Route Segment
Existing Transmission Line
SH249 Right-of-Way (Under Construction)

CASTLE 230KV TRANSMISSION LINE AND SUBSTATION PROJECT
PRELIMINARY ALTERNATIVE SEGMENTS



Date: 10/12/2020



If approved, only one route (consisting of multiple route segments) from a "Cut-In" option to an "Alternative Substation Site" option will be selected by the PUCT.
 For a more detailed map, please see the project website: <https://www.entergy-texas.com/transmission/castle>