

# RIGHT-OF-WAY CLEARING

WE POWER LIFE

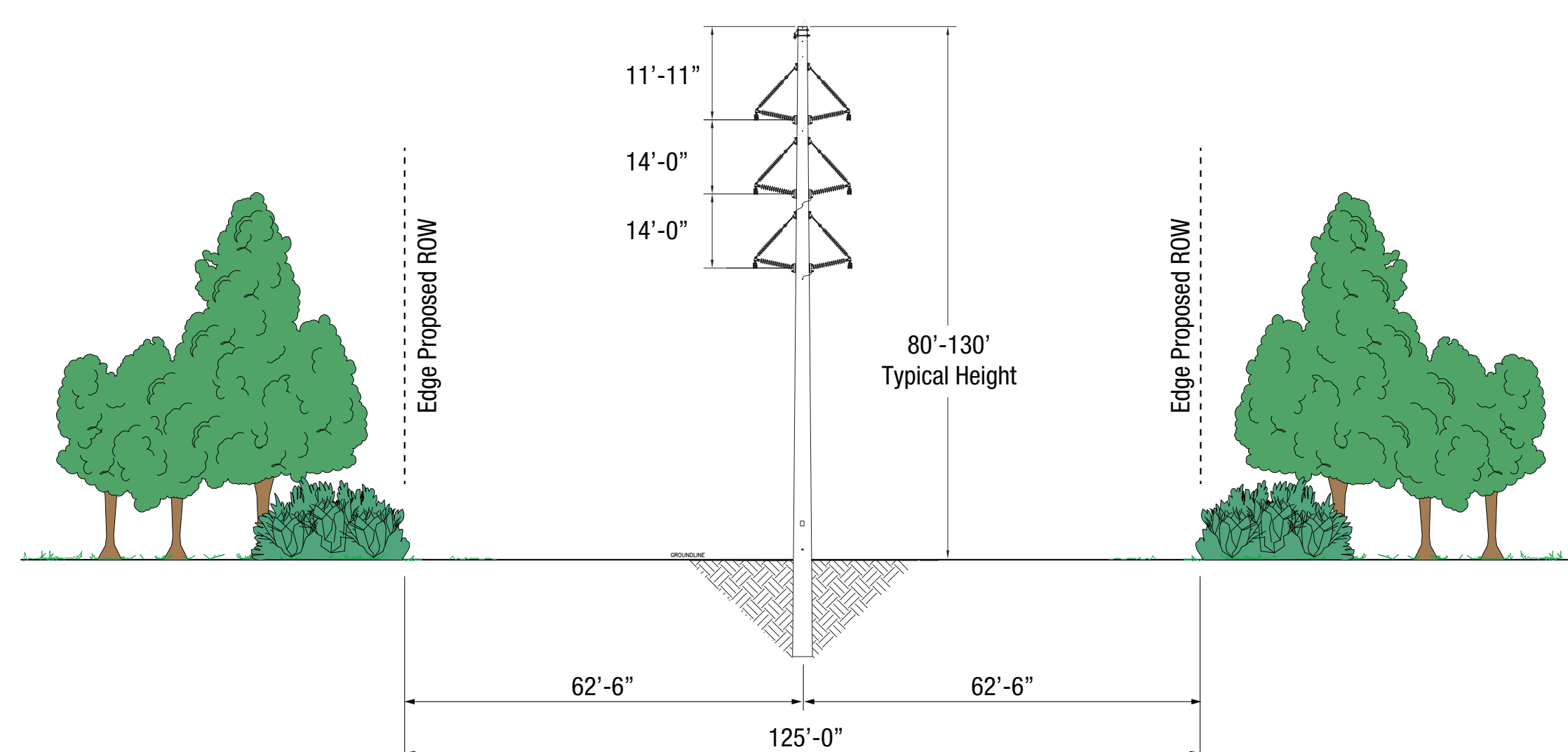
## ABOUT RIGHT-OF-WAY CLEARING

- Trees and branches near or touching power lines can cause service interruptions.
- Electricity can arc or “flashover” from wires to nearby trees before actual contact is made, causing electric current to flow through the trees to the ground.
- To ensure everyone’s safety, Texas, like most states, has adopted the National Electrical Safety Code.
- The code establishes mandatory clearances to be maintained around power lines.

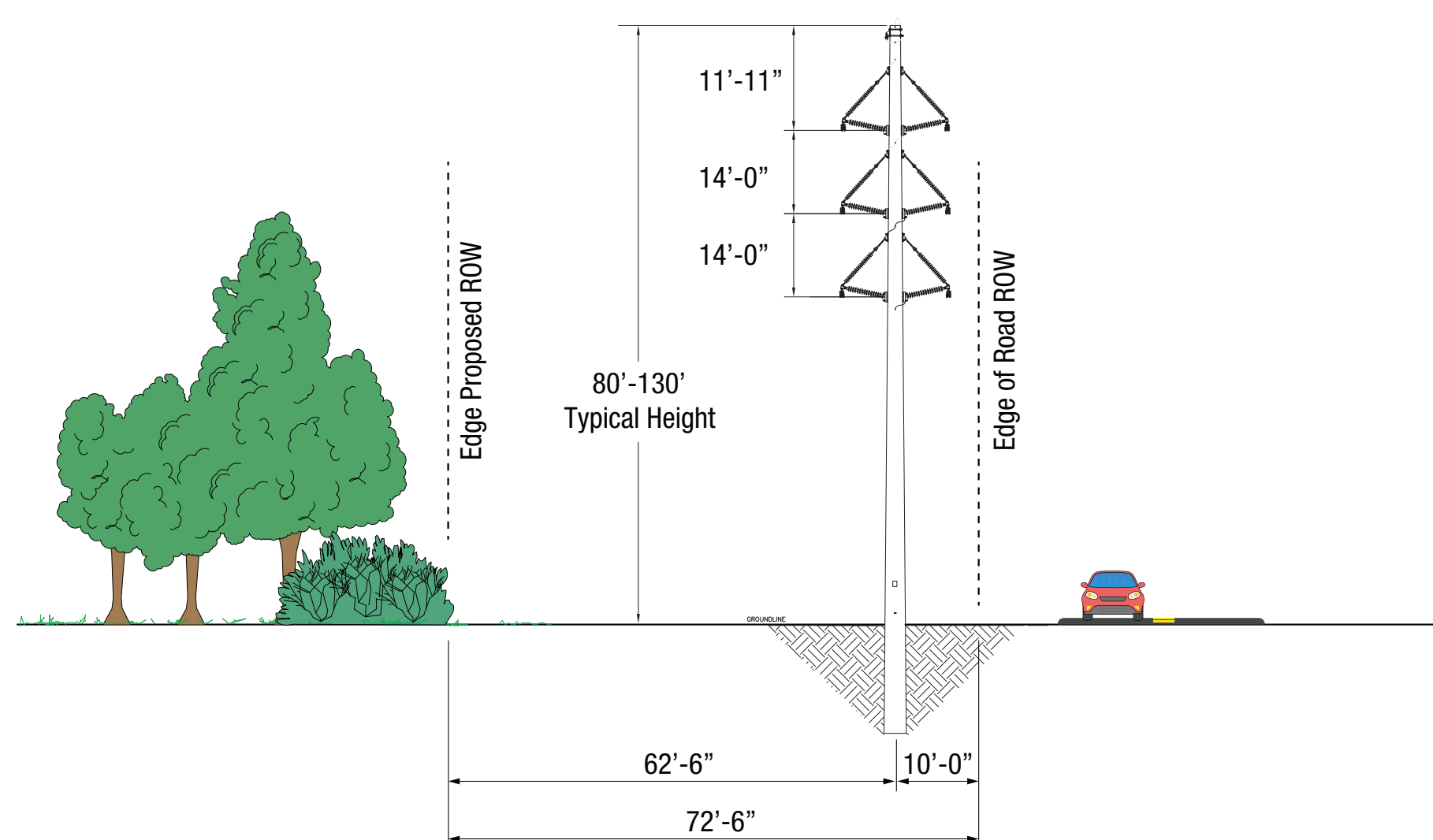
## TYPICAL CROSS SECTIONS

Dimensions could vary depending on location and spatial constraints.

### FULL ROW



### PARALLELING ROAD ROW



### PARALLELING DISTRIBUTION ALONG ROAD ROW

